



ELECTRONIC COPY

LG760506765
Report verification at igi.org



January 9, 2026
IGI Report Number **LG760506765**
Description **LABORATORY GROWN DIAMOND**
Shape and Cutting Style **CUT CORNERED
RECTANGULAR MODIFIED
BRILLIANT**
Measurements **8.26 X 5.82 X 3.68 MM**
GRADING RESULTS
Carat Weight **1.52 CARAT**
Color Grade **FANCY DEEP ORANGE**
Clarity Grade **VS 1**

LABORATORY GROWN DIAMOND REPORT

January 9, 2026
IGI Report Number **LG760506765**
Description **LABORATORY GROWN DIAMOND**
Shape and Cutting Style **CUT CORNERED RECTANGULAR
MODIFIED BRILLIANT**
Measurements **8.26 X 5.82 X 3.68 MM**

GRADING RESULTS

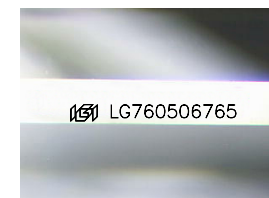
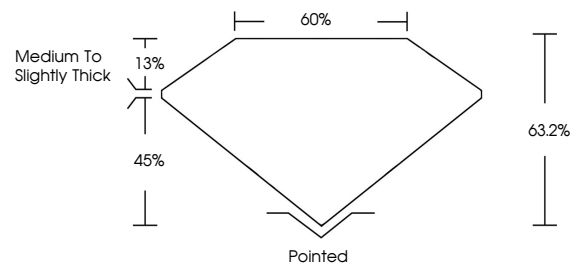
Carat Weight **1.52 CARAT**
Color Grade **FANCY DEEP ORANGE**
Clarity Grade **VS 1**

ADDITIONAL GRADING INFORMATION

Polish **EXCELLENT**
Symmetry **EXCELLENT**
Fluorescence **NONE**
Inscription(s) **IGI LG760506765**

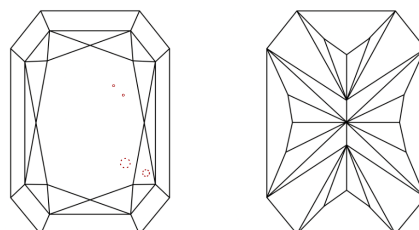
Comments: This Laboratory Grown Diamond was created by Chemical Vapor Deposition (CVD) growth process. Indications of post-growth treatment.

PROPORTIONS



Sample Image Used

CLARITY CHARACTERISTICS



KEY TO SYMBOLS

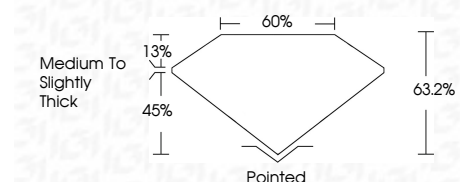
Red symbols indicate internal characteristics.
Green symbols indicate external characteristics.

COLOR

D E F G H I J Faint Very Light Light

CLARITY

FL	IF	VS ¹⁻²	VS ¹⁻²	SI ¹⁻²	I ¹⁻³
Flawless	Internally Flawless	Very Very Slightly Included	Very Slightly Included	Slightly Included	Included



ADDITIONAL GRADING INFORMATION

Polish **EXCELLENT**
Symmetry **EXCELLENT**
Fluorescence **NONE**
Inscription(s) **IGI LG760506765**
Comments: This Laboratory Grown Diamond was created by Chemical Vapor Deposition (CVD) growth process. Indications of post-growth treatment.



January 9, 2026
IGI Report No **LG760506765**
CUT CORNERED RECT. MODIFIED BRILLIANT
8.26 X 5.82 X 3.68 MM
Carat Weight **1.52 CARAT**
Color Grade **FANCY DEEP ORANGE**
Clarity Grade **VS 1**
Depth **63.2%**
Table **45%**
Girdle **Medium to Slightly Thick**
Culet **Pointed**
Polish **EXCELLENT**
Symmetry **EXCELLENT**
Fluorescence **NONE**
Inscription(s) **IGI LG760506765**
Comments: This Laboratory Grown Diamond was created by Chemical Vapor Deposition (CVD) growth process. Indications of post-growth treatment.