



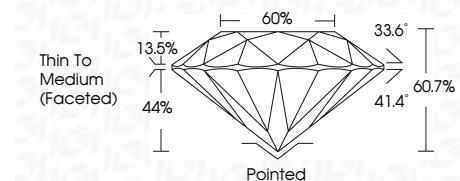
ELECTRONIC COPY

LG760519529 Report verification at igi.org



December 29, 2025 IGI Report Number LG760519529 Description LABORATORY GROWN DIAMOND Shape and Cutting Style ROUND BRILLIANT Measurements 8.18 - 8.22 X 4.98 MM

GRADING RESULTS Carat Weight 2.02 CARATS Color Grade E Clarity Grade VS 2 Cut Grade IDEAL



ADDITIONAL GRADING INFORMATION Polish EXCELLENT Symmetry EXCELLENT Fluorescence NONE Inscription(s) IGI LG760519529 Comments: This Laboratory Grown Diamond was created by Chemical Vapor Deposition (CVD) growth process. Type IIa



December 29, 2025 IGI Report No LG760519529 ROUND BRILLIANT 8.18 - 8.22 X 4.98 MM 2.02 CARATS E VS 2 IDEAL 60.7% 60% Thin To Medium (Faceted) Pointed EXCELLENT EXCELLENT NONE IGI LG760519529 Comments: This Laboratory Grown Diamond was created by Chemical Vapor Deposition (CVD) growth process. Type IIa

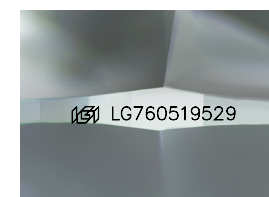
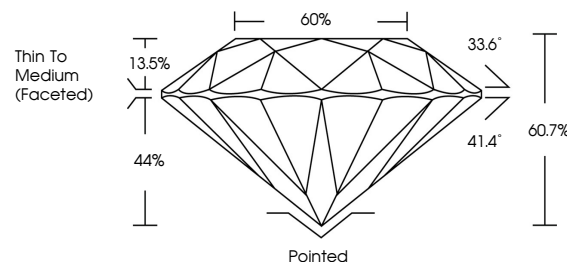
December 29, 2025 IGI Report Number LG760519529 Description LABORATORY GROWN DIAMOND Shape and Cutting Style ROUND BRILLIANT Measurements 8.18 - 8.22 X 4.98 MM

GRADING RESULTS Carat Weight 2.02 CARATS Color Grade E Clarity Grade VS 2 Cut Grade IDEAL

ADDITIONAL GRADING INFORMATION Polish EXCELLENT Symmetry EXCELLENT Fluorescence NONE Inscription(s) IGI LG760519529

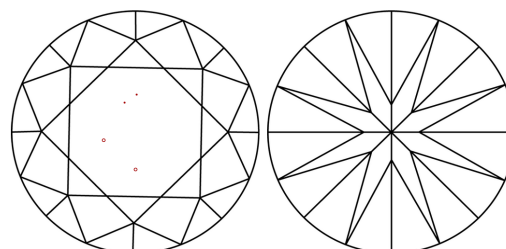
Comments: This Laboratory Grown Diamond was created by Chemical Vapor Deposition (CVD) growth process. Type IIa

PROPORTIONS



Sample Image Used

CLARITY CHARACTERISTICS



KEY TO SYMBOLS

Red symbols indicate internal characteristics. Green symbols indicate external characteristics.

COLOR

D E F G H I J Faint Very Light Light

CLARITY

FL IF VS 1-2 VS 1-2 SI 1-2 I 1-3 Flawless Internally Flawless Very Very Slightly Included Very Slightly Included Slightly Included Included

