



ELECTRONIC COPY

LABORATORY GROWN DIAMOND REPORT

December 26, 2025 IGI Report Number LG760520659 Description LABORATORY GROWN DIAMOND Shape and Cutting Style CUT CORNERED RECTANGULAR MODIFIED BRILLIANT Measurements 10.05 X 7.13 X 4.81 MM

GRADING RESULTS

Carat Weight 2.99 CARATS Color Grade E Clarity Grade VVS 2

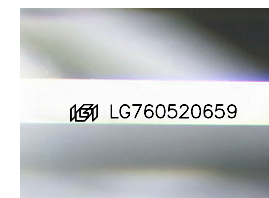
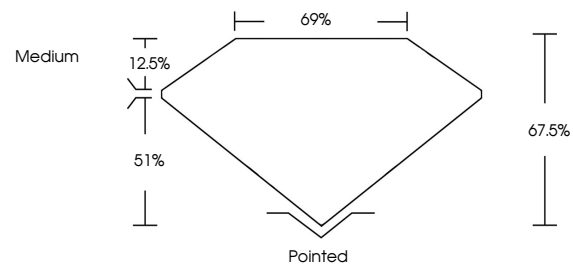
ADDITIONAL GRADING INFORMATION

Polish EXCELLENT Symmetry EXCELLENT Fluorescence NONE

Inscription(s) IGI LG760520659

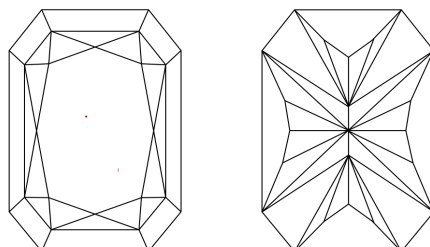
Comments: This Laboratory Grown Diamond was created by Chemical Vapor Deposition (CVD) growth process. Type IIa

PROPORTIONS



Sample Image Used

CLARITY CHARACTERISTICS



KEY TO SYMBOLS

Red symbols indicate internal characteristics. Green symbols indicate external characteristics.

COLOR

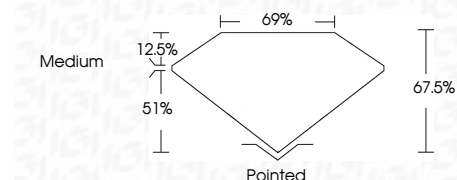
D E F G H I J Faint Very Light Light

CLARITY

FL IF VVS 1-2 VS 1-2 SI 1-2 I 1-3 Flawless Internally Flawless Very Very Slightly Included Very Slightly Included Slightly Included Included



December 26, 2025 IGI Report Number LG760520659 Description LABORATORY GROWN DIAMOND Shape and Cutting Style CUT CORNERED RECTANGULAR MODIFIED BRILLIANT Measurements 10.05 X 7.13 X 4.81 MM GRADING RESULTS Carat Weight 2.99 CARATS Color Grade E Clarity Grade VVS 2



ADDITIONAL GRADING INFORMATION

Polish EXCELLENT Symmetry EXCELLENT Fluorescence NONE Inscription(s) IGI LG760520659 Comments: This Laboratory Grown Diamond was created by Chemical Vapor Deposition (CVD) growth process. Type IIa



December 26, 2025 IGI Report No LG760520659 CUT CORNERED RECT. MODIFIED BRILLIANT 10.05 X 7.13 X 4.81 MM 2.99 CARATS E VVS 2 67.0% 69% Medium Pointed EXCELLENT EXCELLENT NONE NONE IGI LG760520659 Comments: This Laboratory Grown Diamond was created by Chemical Vapor Deposition (CVD) growth process. Type IIa