



ELECTRONIC COPY

LG760533624
Report verification at igi.org



February 19, 2026

IGI Report Number **LG760533624**

Description **LABORATORY GROWN DIAMOND**

Shape and Cutting Style **SQUARE CUSHION MODIFIED
BRILLIANT**

Measurements **7.96 X 7.62 X 5.27 MM**

GRADING RESULTS

Carat Weight **2.98 CARATS**

Color Grade **FANCY VIVID YELLOW**

Clarity Grade **VS 2**

Cut Grade **GOOD**

LABORATORY GROWN DIAMOND REPORT

February 19, 2026

IGI Report Number **LG760533624**

Description **LABORATORY GROWN DIAMOND**

Shape and Cutting Style **SQUARE CUSHION MODIFIED
BRILLIANT**

Measurements **7.96 X 7.62 X 5.27 MM**

GRADING RESULTS

Carat Weight **2.98 CARATS**

Color Grade **FANCY VIVID YELLOW**

Clarity Grade **VS 2**

Cut Grade **GOOD**

ADDITIONAL GRADING INFORMATION

Polish **EXCELLENT**

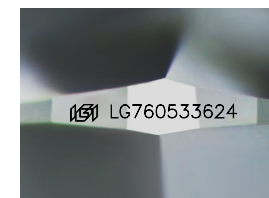
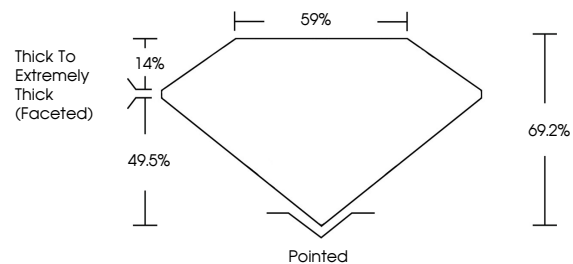
Symmetry **EXCELLENT**

Fluorescence **VERY SLIGHT**

Inscription(s) **IGI LG760533624**

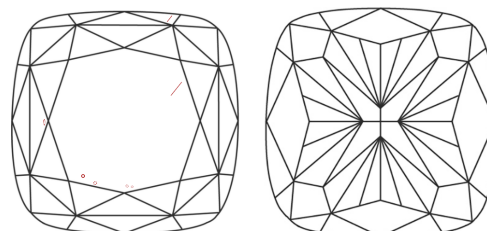
Comments: This Laboratory Grown Diamond was created by Chemical Vapor Deposition (CVD) growth process. Indications of post-growth treatment.

PROPORTIONS



Sample Image Used

CLARITY CHARACTERISTICS



KEY TO SYMBOLS

Red symbols indicate internal characteristics.
Green symbols indicate external characteristics.

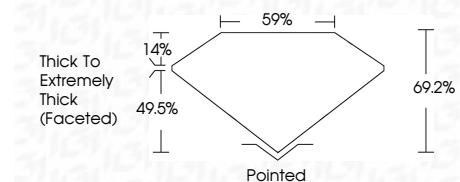
COLOR

D E F G H I J Faint Very Light Light

CLARITY

FL IF VS¹⁻² VS¹⁻² SI¹⁻² I¹⁻³

Flawless Internally Flawless Very Very Slightly Included Very Slightly Included Slightly Included Included



ADDITIONAL GRADING INFORMATION

Polish **EXCELLENT**

Symmetry **EXCELLENT**

Fluorescence **VERY SLIGHT**

Inscription(s) **IGI LG760533624**

Comments: This Laboratory Grown Diamond was created by Chemical Vapor Deposition (CVD) growth process. Indications of post-growth treatment.



IGI



February 19, 2026	IGI Report No LG760533624	SQUARE CUSHION MODIFIED BRILLIANT	2.98 CARATS	FANCY VIVID YELLOW	VS 2	GOOD	69.2%	59%	Thick To Extremely Thick (Faceted)	Pointed	EXCELLENT	EXCELLENT	VERY SLIGHT	IGI LG760533624
Carat Weight	Color Grade	Clarity Grade	Depth	Table	Girdle	Culet	Polish	Symmetry	Fluorescence	Inscription(s)	Comments: This Laboratory Grown Diamond was created by Chemical Vapor Deposition (CVD) growth process. Indications of post-growth treatment.			