



**ELECTRONIC COPY**

LG760539310  
Report verification at igi.org



December 30, 2025

IGI Report Number **LG760539310**

Description **LABORATORY GROWN DIAMOND**

Shape and Cutting Style **PRINCESS CUT**

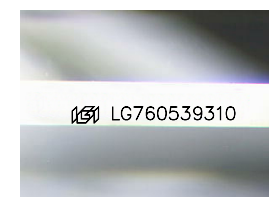
Measurements **7.43 X 7.41 X 5.38 MM**

**GRADING RESULTS**

Carat Weight **2.58 CARATS**

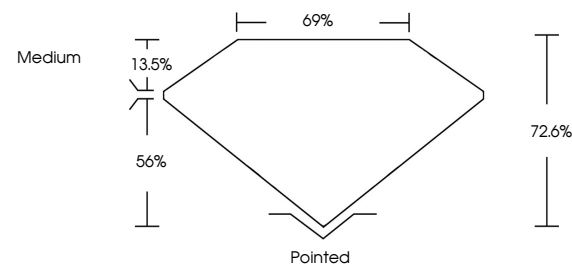
Color Grade **D**

Clarity Grade **VS 1**

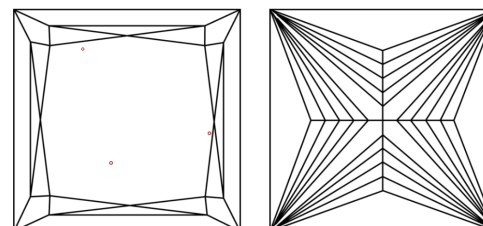


Sample Image Used

**PROPORTIONS**



**CLARITY CHARACTERISTICS**



**KEY TO SYMBOLS**

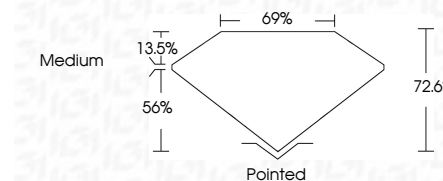
Red symbols indicate internal characteristics.  
Green symbols indicate external characteristics.

**COLOR**

D E F G H I J Faint Very Light Light

**CLARITY**

FL	IF	VS <sup>1-2</sup>	VS <sup>1-2</sup>	SI <sup>1-2</sup>	I <sup>1-3</sup>
Flawless	Internally Flawless	Very Very Slightly Included	Very Slightly Included	Slightly Included	Included



**ADDITIONAL GRADING INFORMATION**

Polish **EXCELLENT**

Symmetry **EXCELLENT**

Fluorescence **NONE**

Inscription(s) **IGI LG760539310**

Comments: This Laboratory Grown Diamond was created by Chemical Vapor Deposition (CVD) growth process.  
Type IIa



**IGI**



December 30, 2025  
IGI Report No LG760539310  
PRINCESS CUT

2.58 CARATS  
D

7.43 X 7.41 X 5.38 MM  
Color Grade D  
Clarity Grade VS 1  
Table 13.5%  
Depth 56%  
Girdle 69%  
Medium

Pointed  
EXCELLENT  
EXCELLENT  
NONE  
IGI LG760539310

Comments: This Laboratory Grown Diamond was created by Chemical Vapor Deposition (CVD) growth process.  
Type IIa