



ELECTRONIC COPY

LABORATORY GROWN DIAMOND REPORT

December 27, 2025 IGI Report Number LG760553937 Description LABORATORY GROWN DIAMOND Shape and Cutting Style CUT CORNERED RECTANGULAR MODIFIED BRILLIANT Measurements 10.24 X 7.07 X 4.80 MM

GRADING RESULTS

Carat Weight 3.04 CARATS Color Grade E Clarity Grade VS 2

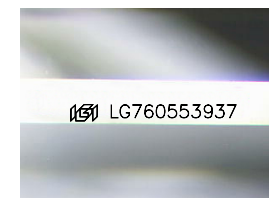
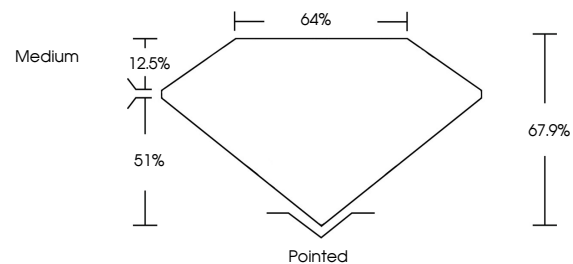
ADDITIONAL GRADING INFORMATION

Polish EXCELLENT Symmetry EXCELLENT Fluorescence NONE

Inscription(s) IGI LG760553937

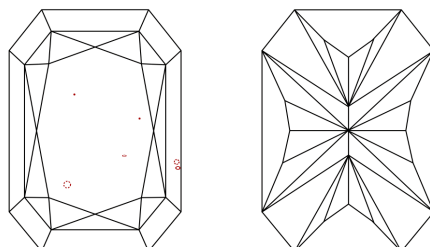
Comments: This Laboratory Grown Diamond was created by Chemical Vapor Deposition (CVD) growth process. Type IIa

PROPORTIONS



Sample Image Used

CLARITY CHARACTERISTICS



KEY TO SYMBOLS

Red symbols indicate internal characteristics. Green symbols indicate external characteristics.

COLOR

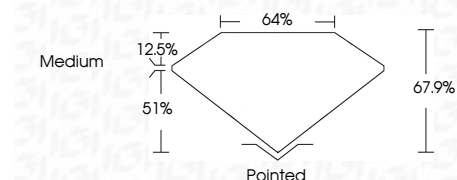
D E F G H I J Faint Very Light Light

CLARITY

FL IF VS 1-2 VS 1-2 SI 1-2 I 1-3 Flawless Internally Flawless Very Very Slightly Included Very Slightly Included Slightly Included Included



December 27, 2025 IGI Report Number LG760553937 Description LABORATORY GROWN DIAMOND Shape and Cutting Style CUT CORNERED RECTANGULAR MODIFIED BRILLIANT Measurements 10.24 X 7.07 X 4.80 MM GRADING RESULTS Carat Weight 3.04 CARATS Color Grade E Clarity Grade VS 2



ADDITIONAL GRADING INFORMATION

Polish EXCELLENT Symmetry EXCELLENT Fluorescence NONE Inscription(s) IGI LG760553937 Comments: This Laboratory Grown Diamond was created by Chemical Vapor Deposition (CVD) growth process. Type IIa



December 27, 2025 IGI Report No LG760553937 CUT CORNERED RECT. MODIFIED BRILLIANT 10.24 X 7.07 X 4.80 MM 3.04 CARATS E VS 2 67.9% 12.5% Medium Pointed EXCELLENT EXCELLENT NONE NONE IGI LG760553937 Comments: This Laboratory Grown Diamond was created by Chemical Vapor Deposition (CVD) growth process. Type IIa