



LABORATORY GROWN DIAMOND REPORT

January 2, 2026
 IGI Report Number **LG760565682**
 Description **LABORATORY GROWN DIAMOND**
 Shape and Cutting Style **OVAL BRILLIANT**
 Measurements **7.56 X 5.42 X 3.35 MM**

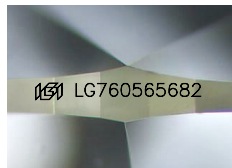
GRADING RESULTS

Carat Weight **0.91 CARAT**
 Color Grade **E**
 Clarity Grade **SI 1**

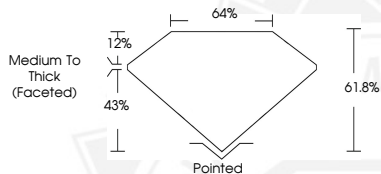
ADDITIONAL GRADING INFORMATION

Polish **VERY GOOD**
 Symmetry **VERY GOOD**
 Fluorescence **NONE**
 Inscription(s) **IGI LG760565682**

Comments: This Laboratory Grown Diamond was created by Chemical Vapor Deposition (CVD) growth process.
 Type IIa



Sample Image Used



January 2, 2026
 IGI Report Number **LG760565682**
OVAL BRILLIANT
LABORATORY GROWN DIAMOND
7.56 X 5.42 X 3.35 MM
 Carat Weight **0.91 CARAT**
 Color Grade **E**
 Clarity Grade **SI 1**
 Polish **VERY GOOD**
 Symmetry **VERY GOOD**
 Fluorescence **NONE**
 Inscription(s) **IGI LG760565682**

Comments: This Laboratory Grown Diamond was created by Chemical Vapor Deposition (CVD) growth process. Type IIa



January 2, 2026
 IGI Report Number **LG760565682**
OVAL BRILLIANT
LABORATORY GROWN DIAMOND
7.56 X 5.42 X 3.35 MM
 Carat Weight **0.91 CARAT**
 Color Grade **E**
 Clarity Grade **SI 1**
 Polish **VERY GOOD**
 Symmetry **VERY GOOD**
 Fluorescence **NONE**
 Inscription(s) **IGI LG760565682**

Comments: This Laboratory Grown Diamond was created by Chemical Vapor Deposition (CVD) growth process. Type IIa



THIS DOCUMENT WAS PRODUCED WITH THE FOLLOWING SECURITY MEASURES: SPECIAL DOCUMENT PAPER, INK SCREENS, WATERMARK, BACKGROUND DESIGNS, HOLOGRAM AND OTHER SECURITY FEATURES NOT LISTED AND DO EXCEED DOCUMENT SECURITY INDUSTRY GUIDELINES.