



**ELECTRONIC COPY**

## LABORATORY GROWN DIAMOND REPORT

December 26, 2025	
IGI Report Number	LG760567087
Description	LABORATORY GROWN DIAMOND
Shape and Cutting Style	CUT CORNERED RECTANGULAR MODIFIED BRILLIANT
Measurements	10.75 X 7.45 X 4.97 MM

## GRADING RESULTS

Carat Weight	3.53 CARATS
Color Grade	G
Clarity Grade	VS 1

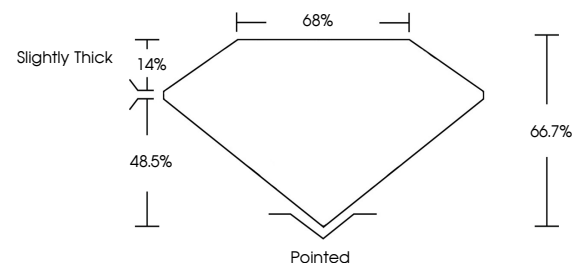
### ADDITIONAL GRADING INFORMATION

Polish	EXCELLENT
Symmetry	EXCELLENT
Fluorescence	NONE
Inscription(s)	 LG760567087

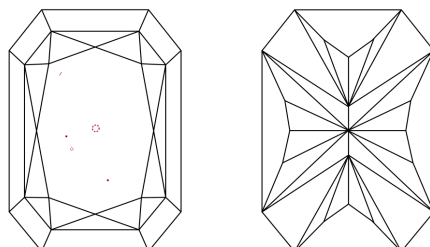
Comments: This Laboratory Grown Diamond was created by Chemical Vapor Deposition (CVD) growth process.  
Type IIa

LG760567087  
Report verification at [igi.org](https://igi.org)

## PROPORTIONS

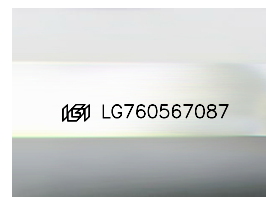


## CLARITY CHARACTERISTICS



### KEY TO SYMBOLS

Red symbols indicate internal characteristics.  
Green symbols indicate external characteristics.



Sample Image Used

COLOR

D E F G H I J Faint Very Light Light

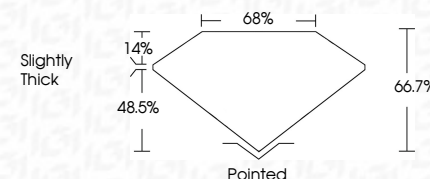
## CLARITY

FL	IF	VVS <sup>1-2</sup>	VS <sup>1-2</sup>	SI <sup>1-2</sup>	I <sup>1-3</sup>
Flawless	Internally Flawless	Very Very Slightly Included	Very Slightly Included	Slightly Included	Included

## LABORATORY GROWN DIAMOND REPORT



December 26, 2025	
IGI Report Number	LG760567087
Description	LABORATORY GROWN DIAMOND
Shape and Cutting Style	CUT CORNERED RECTANGULAR MODIFIED BRILLIANT
Measurements	10.75 X 7.45 X 4.97 MM
<b>GRADING RESULTS</b>	
Carat Weight	3.53 CARATS
Color Grade	G
Clarity Grade	VS 1



### ADDITIONAL GRADING INFORMATION

Polish	EXCELLENT
Symmetry	EXCELLENT
Fluorescence	NONE
Inscription(s)	<del>163</del> LG760567087
Comments: This Laboratory Grown Diamond was created by Chemical Vapor Deposition (CVD) growth process.	
Type IIa	



© IGI 2020, International Gemological Institute

FD - 10 20

**www.igi.org**

THIS DOCUMENT WAS PRODUCED WITH THE FOLLOWING SECURITY MEASURES: SPECIAL DOCUMENT PAPER, INK SCREENS, WATERMARK, BACKGROUND DESIGNS, HOLOGRAM AND OTHER SECURITY FEATURES NOT LISTED AND DO EXCEED DOCUMENT SECURITY INDUSTRY GUIDELINE

December 26, 2025	3.53 CARATS	G	Vs 1	64.7%	68%	Slightly Thick	Pointed	EXCELLENT	EXCELLENT	NONE	1691 LG740557087	Comments: This Laboratory Grown Diamond was created by Chemical Vapor Deposition (CVD) growth process. Type IIa
GI Report No. LG740557087 CUT CORNERED RECT. MODIFIED BRILLIANT 10.75 X 7.46 X 4.97 MM	Carat Weight Color Grade Clarity Grade Depth Table Girdle Culet Polish Symmetry Fluorescence Inscription(s)	VS 1 64.7% 68% Slightly Thick	Pointed EXCELLENT EXCELLENT NONE 1691 LG740557087									