



ELECTRONIC COPY

LG760571009
Report verification at igi.org



February 3, 2026

IGI Report Number **LG760571009**

Description **LABORATORY GROWN DIAMOND**

Shape and Cutting Style **EMERALD CUT**

Measurements **8.63 X 5.69 X 4.08 MM**

GRADING RESULTS

Carat Weight **2.06 CARATS**

Color Grade **FANCY INTENSE PINK**

Clarity Grade **VS 1**

LABORATORY GROWN DIAMOND REPORT

February 3, 2026

IGI Report Number **LG760571009**

Description **LABORATORY GROWN DIAMOND**

Shape and Cutting Style **EMERALD CUT**

Measurements **8.63 X 5.69 X 4.08 MM**

GRADING RESULTS

Carat Weight **2.06 CARATS**

Color Grade **FANCY INTENSE PINK**

Clarity Grade **VS 1**

ADDITIONAL GRADING INFORMATION

Polish **EXCELLENT**

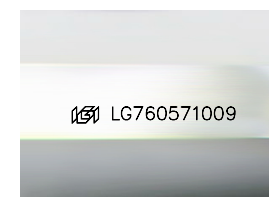
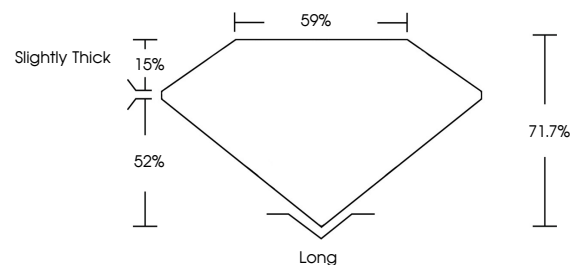
Symmetry **EXCELLENT**

Fluorescence **SLIGHT**

Inscription(s) **IGI LG760571009**

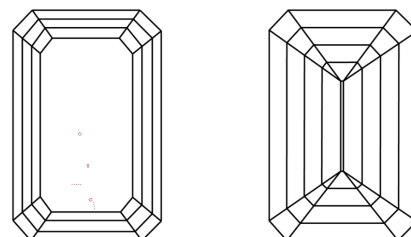
Comments: This Laboratory Grown Diamond was created by Chemical Vapor Deposition (CVD) growth process. Indications of post-growth treatment.

PROPORTIONS



Sample Image Used

CLARITY CHARACTERISTICS



KEY TO SYMBOLS

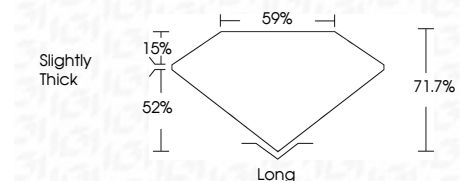
Red symbols indicate internal characteristics.
Green symbols indicate external characteristics.

COLOR

D E F G H I J Faint Very Light Light

CLARITY

FL	IF	VS ¹⁻²	VS ¹⁻²	SI ¹⁻²	I ¹⁻³
Flawless	Internally Flawless	Very Very Slightly Included	Very Slightly Included	Slightly Included	Included



ADDITIONAL GRADING INFORMATION

Polish **EXCELLENT**

Symmetry **EXCELLENT**

Fluorescence **SLIGHT**

Inscription(s) **IGI LG760571009**

Comments: This Laboratory Grown Diamond was created by Chemical Vapor Deposition (CVD) growth process. Indications of post-growth treatment.



February 3, 2026
IGI Report No LG760571009
EMERALD CUT
8.63 X 5.69 X 4.08 MM
2.06 CARATS
FANCY INTENSE PINK
VS 1
71.7%
59%
Slightly Thick
Long
EXCELLENT
EXCELLENT
SLIGHT
IGI LG760571009

Comments: This Laboratory Grown Diamond was created by Chemical Vapor Deposition (CVD) growth process. Indications of post-growth treatment.