



ELECTRONIC COPY

LG760574197
Report verification at igi.org



February 6, 2026

IGI Report Number **LG760574197**

Description **LABORATORY GROWN DIAMOND**

Shape and Cutting Style **EMERALD CUT**

Measurements **8.33 X 5.45 X 3.45 MM**

GRADING RESULTS

Carat Weight **1.60 CARAT**

Color Grade **FANCY INTENSE PINK**

Clarity Grade **VVS 2**

LABORATORY GROWN DIAMOND REPORT

February 6, 2026

IGI Report Number **LG760574197**

Description **LABORATORY GROWN DIAMOND**

Shape and Cutting Style **EMERALD CUT**

Measurements **8.33 X 5.45 X 3.45 MM**

GRADING RESULTS

Carat Weight **1.60 CARAT**

Color Grade **FANCY INTENSE PINK**

Clarity Grade **VVS 2**

ADDITIONAL GRADING INFORMATION

Polish **EXCELLENT**

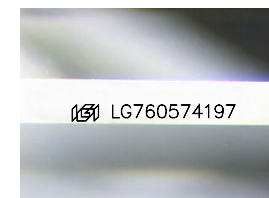
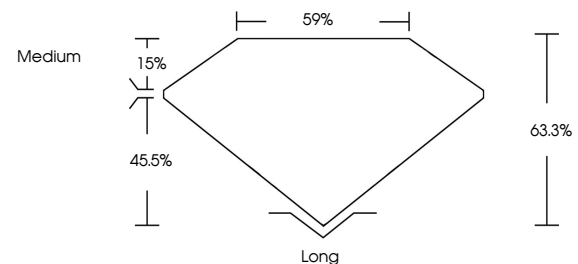
Symmetry **EXCELLENT**

Fluorescence **SLIGHT**

Inscription(s) **IGI LG760574197**

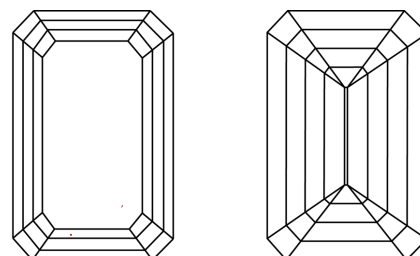
Comments: This Laboratory Grown Diamond was created by Chemical Vapor Deposition (CVD) growth process. Indications of post-growth treatment.

PROPORTIONS



Sample Image Used

CLARITY CHARACTERISTICS



KEY TO SYMBOLS

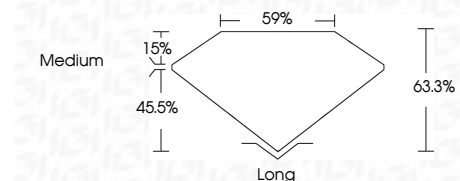
Red symbols indicate internal characteristics.
Green symbols indicate external characteristics.

COLOR

D E F G H I J Faint Very Light Light

CLARITY

FL	IF	VVS ¹⁻²	VS ¹⁻²	SI ¹⁻²	I ¹⁻³
Flawless	Internally Flawless	Very Very Slightly Included	Very Slightly Included	Slightly Included	Included



ADDITIONAL GRADING INFORMATION

Polish **EXCELLENT**

Symmetry **EXCELLENT**

Fluorescence **SLIGHT**

Inscription(s) **IGI LG760574197**

Comments: This Laboratory Grown Diamond was created by Chemical Vapor Deposition (CVD) growth process. Indications of post-growth treatment.



February 6, 2026	IGI Report No LG760574197	EMERALD CUT	1.60 CARAT	FANCY INTENSE PINK	VVS 2	63.3%	59%	Medium	Long	EXCELLENT	EXCELLENT	SLIGHT	IGI LG760574197
8.33 X 5.45 X 3.45 MM	Carat Weight	Color Grade	Clarity Grade	Depth	Table	Graile	Culet	Polish	Symmetry	Fluorescence	Inscription(s)		

Comments: This Laboratory Grown Diamond was created by Chemical Vapor Deposition (CVD) growth process. Indications of post-growth treatment.