



**ELECTRONIC COPY**

LG760574566  
Report verification at igi.org



February 9, 2026

IGI Report Number **LG760574566**

Description **LABORATORY GROWN DIAMOND**

Shape and Cutting Style **EMERALD CUT**

Measurements **9.03 X 5.61 X 3.68 MM**

**GRADING RESULTS**

Carat Weight **2.02 CARATS**

Color Grade **FANCY PINK**

Clarity Grade **VS 1**

February 9, 2026  
IGI Report Number **LG760574566**  
Description **LABORATORY GROWN DIAMOND**  
Shape and Cutting Style **EMERALD CUT**  
Measurements **9.03 X 5.61 X 3.68 MM**

**GRADING RESULTS**

Carat Weight **2.02 CARATS**

Color Grade **FANCY PINK**

Clarity Grade **VS 1**

**ADDITIONAL GRADING INFORMATION**

Polish **EXCELLENT**

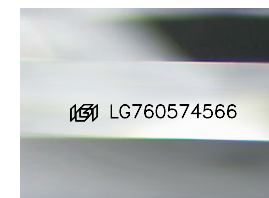
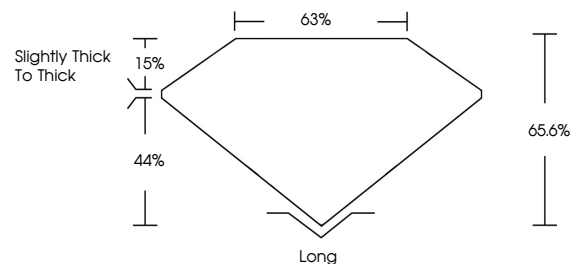
Symmetry **EXCELLENT**

Fluorescence **SLIGHT**

Inscription(s) **LG760574566**

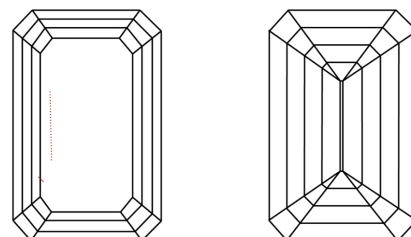
Comments: This Laboratory Grown Diamond was created by Chemical Vapor Deposition (CVD) growth process. Indications of post-growth treatment.

**PROPORTIONS**



Sample Image Used

**CLARITY CHARACTERISTICS**



**KEY TO SYMBOLS**

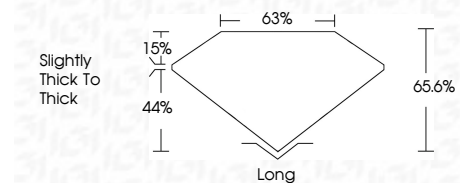
Red symbols indicate internal characteristics.  
Green symbols indicate external characteristics.

**COLOR**

D E F G H I J Faint Very Light Light

**CLARITY**

FL	IF	VS <sup>1-2</sup>	VS <sup>1-2</sup>	SI <sup>1-2</sup>	I <sup>1-3</sup>
Flawless	Internally Flawless	Very Very Slightly Included	Very Slightly Included	Slightly Included	Included



**ADDITIONAL GRADING INFORMATION**

Polish **EXCELLENT**

Symmetry **EXCELLENT**

Fluorescence **SLIGHT**

Inscription(s) **LG760574566**

Comments: This Laboratory Grown Diamond was created by Chemical Vapor Deposition (CVD) growth process. Indications of post-growth treatment.



**IGI**

February 9, 2026  
IGI Report No. **LG760574566**  
**EMERALD CUT**

**2.02 CARATS**  
Carat Weight  
**FANCY PINK**  
Color Grade

**VS 1**  
Clarity Grade  
**65.6%**  
Depth  
**63%**  
Table  
**Slightly Thick To Thick**  
Girdle

**Long**  
Culet  
**EXCELLENT**  
Polish  
**EXCELLENT**  
Symmetry  
**SLIGHT**  
Fluorescence  
**IGI LG760574566**  
Inscription(s)

Comments: This Laboratory Grown Diamond was created by Chemical Vapor Deposition (CVD) growth process. Indications of post-growth treatment.