



**ELECTRONIC COPY**

LG760580035  
Report verification at igi.org



December 30, 2025

IGI Report Number **LG760580035**

Description **LABORATORY GROWN DIAMOND**

Shape and Cutting Style **PRINCESS CUT**

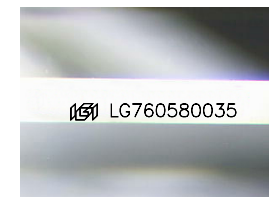
Measurements **8.61 X 8.59 X 6.23 MM**

**GRADING RESULTS**

Carat Weight **4.07 CARATS**

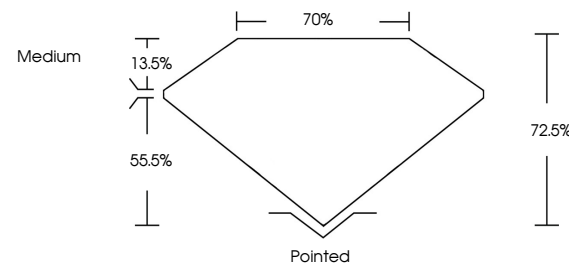
Color Grade **E**

Clarity Grade **VS 1**

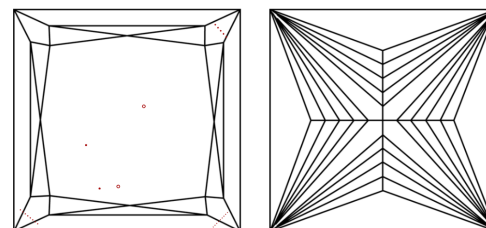


Sample Image Used

**PROPORTIONS**



**CLARITY CHARACTERISTICS**



**KEY TO SYMBOLS**

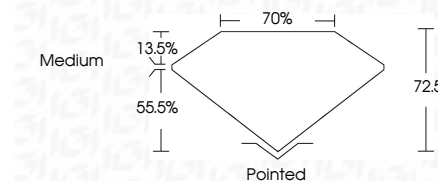
Red symbols indicate internal characteristics.  
Green symbols indicate external characteristics.

**COLOR**

D E F G H I J Faint Very Light Light

**CLARITY**

FL	IF	VS <sup>1-2</sup>	VS <sup>1-2</sup>	SI <sup>1-2</sup>	I <sup>1-3</sup>
Flawless	Internally Flawless	Very Very Slightly Included	Very Slightly Included	Slightly Included	Included



**ADDITIONAL GRADING INFORMATION**

Polish **EXCELLENT**

Symmetry **EXCELLENT**

Fluorescence **NONE**

Inscription(s) **IGI LG760580035**

Comments: This Laboratory Grown Diamond was created by Chemical Vapor Deposition (CVD) growth process. Type IIa



**IGI**



December 30, 2025  
IGI Report No LG760580035  
PRINCESS CUT

8.61 X 8.59 X 6.23 MM

4.07 CARATS  
E

Carat Weight  
Color Grade  
Clarity Grade  
Depth  
Table  
Girdle  
Medium

VS 1  
72.5%  
70%  
Pointed  
EXCELLENT  
EXCELLENT  
NONE  
IGI LG760580035

Culet  
Polish  
Symmetry  
Fluorescence  
Inscription(s)

Comments: This Laboratory Grown Diamond was created by Chemical Vapor Deposition (CVD) growth process. Type IIa