



**ELECTRONIC COPY**

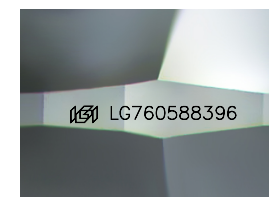
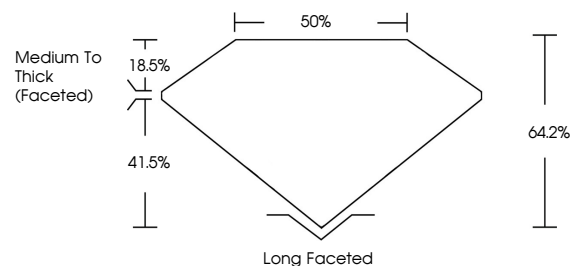
LG760588396  
Report verification at igi.org



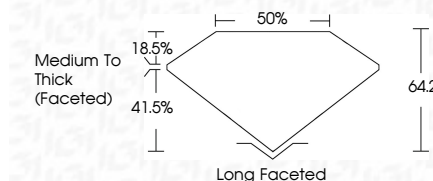
December 26, 2025  
IGI Report Number **LG760588396**  
Description **LABORATORY GROWN DIAMOND**  
Shape and Cutting Style **CUSHION MODIFIED BRILLIANT**  
Measurements **10.56 X 7.99 X 5.13 MM**  
**GRADING RESULTS**  
Carat Weight **3.19 CARATS**  
Color Grade **D**  
Clarity Grade **VVS 2**

December 26, 2025  
IGI Report Number **LG760588396**  
Description **LABORATORY GROWN DIAMOND**  
Shape and Cutting Style **CUSHION MODIFIED BRILLIANT**  
Measurements **10.56 X 7.99 X 5.13 MM**  
**GRADING RESULTS**  
Carat Weight **3.19 CARATS**  
Color Grade **D**  
Clarity Grade **VVS 2**

**PROPORTIONS**



Sample Image Used



**ADDITIONAL GRADING INFORMATION**

Polish **EXCELLENT**  
Symmetry **EXCELLENT**  
Fluorescence **NONE**  
Inscription(s) **IGI LG760588396**

Comments: This Laboratory Grown Diamond was created by Chemical Vapor Deposition (CVD) growth process. Type IIa

**ADDITIONAL GRADING INFORMATION**

Polish **EXCELLENT**  
Symmetry **EXCELLENT**  
Fluorescence **NONE**  
Inscription(s) **IGI LG760588396**  
Comments: This Laboratory Grown Diamond was created by Chemical Vapor Deposition (CVD) growth process. Type IIa

**COLOR**

D E F G H I J Faint Very Light Light

**CLARITY**

FL	IF	VVS <sup>1-2</sup>	VS <sup>1-2</sup>	SI <sup>1-2</sup>	I <sup>1-3</sup>
Flawless	Internally Flawless	Very Very Slightly Included	Very Slightly Included	Slightly Included	Included



**IGI**



December 26, 2025  
IGI Report No **LG760588396**  
**CUSHION MODIFIED BRILLIANT**  
**3.19 CARATS**  
D  
Carat Weight **3.19 CARATS**  
Color Grade **D**  
Clarity Grade **VVS 2**  
Depth **64.2%**  
Table **50%**  
Girdle **Medium To Thick (Faceted)**  
Culet **Long Faceted**  
Polish **EXCELLENT**  
Symmetry **EXCELLENT**  
Fluorescence **NONE**  
Inscription(s) **IGI LG760588396**  
Comments: This Laboratory Grown Diamond was created by Chemical Vapor Deposition (CVD) growth process. Type IIa