



ELECTRONIC COPY

LG760591709 Report verification at igi.org

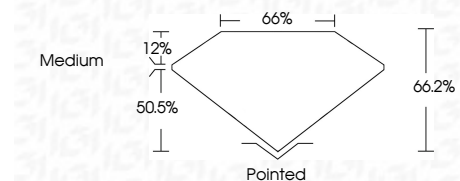


December 30, 2025 IGI Report Number LG760591709 Description LABORATORY GROWN DIAMOND Shape and Cutting Style CUT CORNERED RECTANGULAR MODIFIED BRILLIANT

Measurements 10.25 X 7.34 X 4.86 MM

GRADING RESULTS

Carat Weight 3.08 CARATS Color Grade E Clarity Grade VVS 2



ADDITIONAL GRADING INFORMATION

Polish EXCELLENT Symmetry EXCELLENT Fluorescence NONE Inscription(s) IGI LG760591709 Comments: This Laboratory Grown Diamond was created by Chemical Vapor Deposition (CVD) growth process. Type IIa



December 30, 2025 IGI Report Number LG760591709 Description LABORATORY GROWN DIAMOND Shape and Cutting Style CUT CORNERED RECTANGULAR MODIFIED BRILLIANT Measurements 10.25 X 7.34 X 4.86 MM

GRADING RESULTS

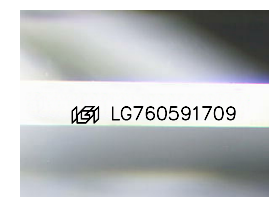
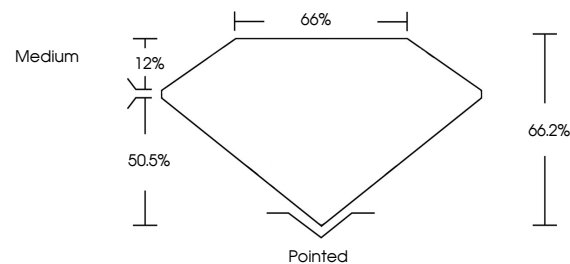
Carat Weight 3.08 CARATS Color Grade E Clarity Grade VVS 2

ADDITIONAL GRADING INFORMATION

Polish EXCELLENT Symmetry EXCELLENT Fluorescence NONE Inscription(s) IGI LG760591709

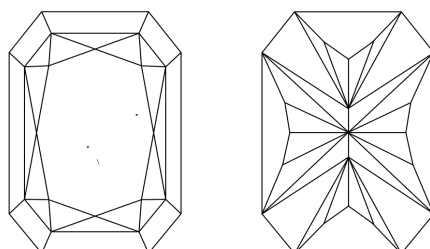
Comments: This Laboratory Grown Diamond was created by Chemical Vapor Deposition (CVD) growth process. Type IIa

PROPORTIONS



Sample Image Used

CLARITY CHARACTERISTICS



KEY TO SYMBOLS

Red symbols indicate internal characteristics. Green symbols indicate external characteristics.

COLOR

D E F G H I J Faint Very Light Light

CLARITY

FL IF VVS 1-2 VS 1-2 SI 1-2 I 1-3 Flawless Internally Flawless Very Very Slightly Included Very Slightly Included Slightly Included Included

December 30, 2025 IGI Report No LG760591709 CUT CORNERED RECT. MODIFIED BRILLIANT 10.25 X 7.34 X 4.86 MM 3.08 CARATS E VVS 2 66.2% 50.5% Medium Pointed EXCELLENT EXCELLENT NONE IGI LG760591709 Comments: This Laboratory Grown Diamond was created by Chemical Vapor Deposition (CVD) growth process. Type IIa