



ELECTRONIC COPY

LG760597294
Report verification at igi.org



December 29, 2025
IGI Report Number LG760597294
Description LABORATORY GROWN DIAMOND
Shape and Cutting Style OVAL BRILLIANT
Measurements 8.82 X 6.19 X 3.76 MM
GRADING RESULTS
Carat Weight 1.29 CARAT
Color Grade F
Clarity Grade VVS 1

LABORATORY GROWN DIAMOND REPORT

December 29, 2025
IGI Report Number LG760597294
Description LABORATORY GROWN DIAMOND
Shape and Cutting Style OVAL BRILLIANT
Measurements 8.82 X 6.19 X 3.76 MM

GRADING RESULTS

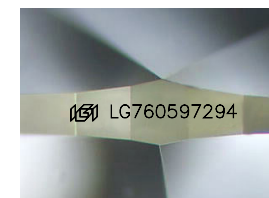
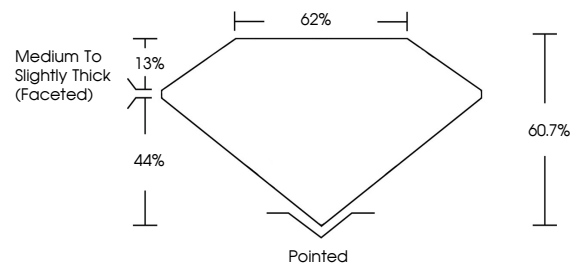
Carat Weight 1.29 CARAT
Color Grade F
Clarity Grade VVS 1

ADDITIONAL GRADING INFORMATION

Polish EXCELLENT
Symmetry EXCELLENT
Fluorescence NONE
Inscription(s) IGI LG760597294

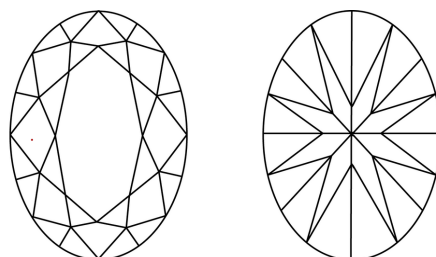
Comments: This Laboratory Grown Diamond was created by Chemical Vapor Deposition (CVD) growth process. Type IIa

PROPORTIONS



Sample Image Used

CLARITY CHARACTERISTICS



KEY TO SYMBOLS

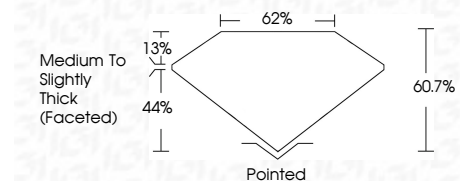
Red symbols indicate internal characteristics.
Green symbols indicate external characteristics.

COLOR

D E F G H I J Faint Very Light Light

CLARITY

FL IF VS 1-2 VS 1-2 SI 1-2 I 1-3
Flawless Internally Flawless Very Very Slightly Included Very Slightly Included Slightly Included Included



ADDITIONAL GRADING INFORMATION

Polish EXCELLENT
Symmetry EXCELLENT
Fluorescence NONE
Inscription(s) IGI LG760597294
Comments: This Laboratory Grown Diamond was created by Chemical Vapor Deposition (CVD) growth process. Type IIa



December 29, 2025
IGI Report No LG760597294
OVAL BRILLIANT
8.82 X 6.19 X 3.76 MM
1.29 CARAT
Color Grade F
Clarity Grade VVS 1
Depth 60.7%
Table 62%
Medium to Slightly Thick (Faceted)
Pointed
Polish EXCELLENT
Symmetry EXCELLENT
Fluorescence NONE
Inscription(s) IGI LG760597294
Comments: This Laboratory Grown Diamond was created by Chemical Vapor Deposition (CVD) growth process. Type IIa