



ELECTRONIC COPY

LABORATORY GROWN DIAMOND REPORT

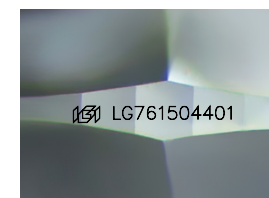
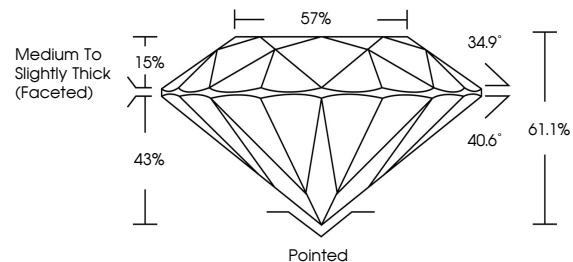
January 27, 2026
IGI Report Number LG761504401
Description LABORATORY GROWN DIAMOND
Shape and Cutting Style ROUND BRILLIANT
Measurements 9.25 - 9.31 X 5.67 MM
GRADING RESULTS
Carat Weight 3.00 CARATS
Color Grade G
Clarity Grade VVS 2
Cut Grade IDEAL

ADDITIONAL GRADING INFORMATION

Polish EXCELLENT
Symmetry EXCELLENT
Fluorescence NONE
Inscription(s) LG761504401

Comments: HEARTS & ARROWS
As Grown - No indication of post-growth treatment. This Laboratory Grown Diamond was created by High Pressure High Temperature (HPHT) growth process. Type II

PROPORTIONS



Sample Image Used

COLOR

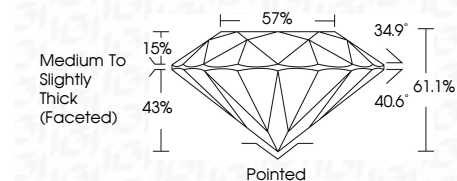
D E F G H I J Faint Very Light Light

CLARITY

FL IF VS 1-2 VS 1-2 SI 1-2 I 1-3
Flawless Internally Flawless Very Very Slightly Included Very Slightly Included Slightly Included Included



January 27, 2026
IGI Report Number LG761504401
Description LABORATORY GROWN DIAMOND
Shape and Cutting Style ROUND BRILLIANT
Measurements 9.25 - 9.31 X 5.67 MM
GRADING RESULTS
Carat Weight 3.00 CARATS
Color Grade G
Clarity Grade VVS 2
Cut Grade IDEAL



ADDITIONAL GRADING INFORMATION

Polish EXCELLENT
Symmetry EXCELLENT
Fluorescence NONE
Inscription(s) LG761504401
Comments: HEARTS & ARROWS
As Grown - No indication of post-growth treatment. This Laboratory Grown Diamond was created by High Pressure High Temperature (HPHT) growth process. Type II



January 27, 2026
IGI Report No LG761504401
ROUND BRILLIANT
9.25 - 9.31 X 5.67 MM
3.00 CARATS
Color Grade G
Clarity Grade VVS 2
Cut Grade IDEAL
Depth 61.1%
Table 57%
Medium To Slightly Thick (Faceted)
Pointed
Polish EXCELLENT
Symmetry EXCELLENT
Fluorescence NONE
Inscriptions(s) LG761504401
Comments: HEARTS & ARROWS
As Grown - No indication of post-growth treatment. This Laboratory Grown Diamond was created by High Pressure High Temperature (HPHT) growth process. Type II