



**ELECTRONIC COPY**

LG761512238  
Report verification at igi.org



January 16, 2026  
IGI Report Number **LG761512238**  
Description **LABORATORY GROWN DIAMOND**  
Shape and Cutting Style **SQUARE CUSHION MODIFIED BRILLIANT**  
Measurements **8.92 X 8.55 X 5.77 MM**  
**GRADING RESULTS**  
Carat Weight **4.16 CARATS**  
Color Grade **FANCY YELLOW**  
Clarity Grade **VVS 2**

**LABORATORY GROWN DIAMOND REPORT**

January 16, 2026  
IGI Report Number **LG761512238**  
Description **LABORATORY GROWN DIAMOND**  
Shape and Cutting Style **SQUARE CUSHION MODIFIED BRILLIANT**  
Measurements **8.92 X 8.55 X 5.77 MM**

**GRADING RESULTS**

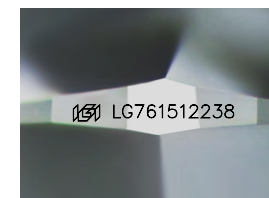
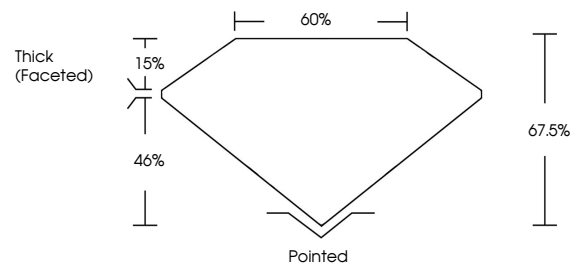
Carat Weight **4.16 CARATS**  
Color Grade **FANCY YELLOW**  
Clarity Grade **VVS 2**

**ADDITIONAL GRADING INFORMATION**

Polish **EXCELLENT**  
Symmetry **EXCELLENT**  
Fluorescence **NONE**  
Inscription(s) **IGI LG761512238**

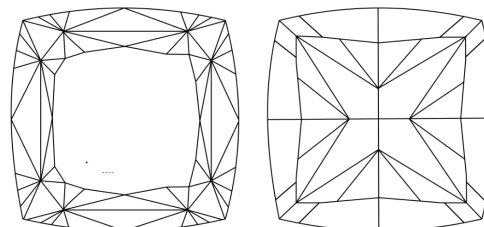
Comments: This Laboratory Grown Diamond was created by Chemical Vapor Deposition (CVD) growth process.

**PROPORTIONS**



Sample Image Used

**CLARITY CHARACTERISTICS**



**KEY TO SYMBOLS**

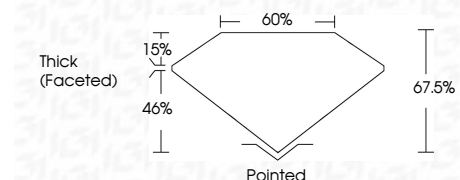
Red symbols indicate internal characteristics.  
Green symbols indicate external characteristics.

**COLOR**

D E F G H I J Faint Very Light Light

**CLARITY**

FL	IF	VVS <sup>1-2</sup>	VS <sup>1-2</sup>	SI <sup>1-2</sup>	I <sup>1-3</sup>
Flawless	Internally Flawless	Very Very Slightly Included	Very Slightly Included	Slightly Included	Included



**ADDITIONAL GRADING INFORMATION**

Polish **EXCELLENT**  
Symmetry **EXCELLENT**  
Fluorescence **NONE**  
Inscription(s) **IGI LG761512238**  
Comments: This Laboratory Grown Diamond was created by Chemical Vapor Deposition (CVD) growth process.



January 16, 2026  
IGI Report No LG761512238  
**SQUARE CUSHION MODIFIED BRILLIANT**  
4.16 CARATS  
Carat Weight  
Color Grade  
Clarity Grade  
Depth  
Table  
Girdle  
Thick (Faceted)  
Pointed  
Polish  
Symmetry  
Fluorescence  
Inscription(s)  
**EXCELLENT**  
**EXCELLENT**  
**NONE**  
**IGI LG761512238**  
Comments: This Laboratory Grown Diamond was created by Chemical Vapor Deposition (CVD) growth process.