



**ELECTRONIC COPY**

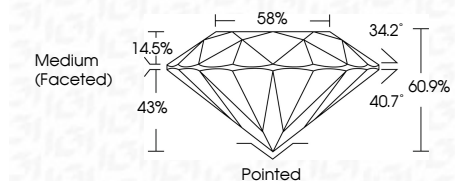
LG761513285  
Report verification at igi.org



January 18, 2026  
IGI Report Number **LG761513285**  
Description **LABORATORY GROWN DIAMOND**  
Shape and Cutting Style **ROUND BRILLIANT**  
Measurements **10.21 - 10.25 X 6.23 MM**

**GRADING RESULTS**

Carat Weight **4.01 CARATS**  
Color Grade **E**  
Clarity Grade **VS 1**  
Cut Grade **IDEAL**



**ADDITIONAL GRADING INFORMATION**

Polish **EXCELLENT**  
Symmetry **EXCELLENT**  
Fluorescence **NONE**  
Inscription(s) **IGI LG761513285**  
Comments: This Laboratory Grown Diamond was created by Chemical Vapor Deposition (CVD) growth process. Type IIa



January 18, 2026  
IGI Report No LG761513285  
**ROUND BRILLIANT**  
10.21 - 10.25 X 6.23 MM  
4.01 CARATS  
E  
VS 1  
IDEAL  
60.9%  
58%  
Medium (Faceted)  
Pointed  
EXCELLENT  
EXCELLENT  
NONE  
IGI LG761513285  
Comments: This Laboratory Grown Diamond was created by Chemical Vapor Deposition (CVD) growth process. Type IIa

**LABORATORY GROWN DIAMOND REPORT**

January 18, 2026  
IGI Report Number **LG761513285**  
Description **LABORATORY GROWN DIAMOND**  
Shape and Cutting Style **ROUND BRILLIANT**  
Measurements **10.21 - 10.25 X 6.23 MM**

**GRADING RESULTS**

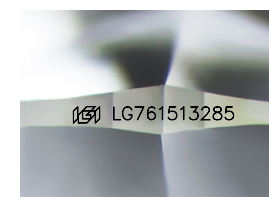
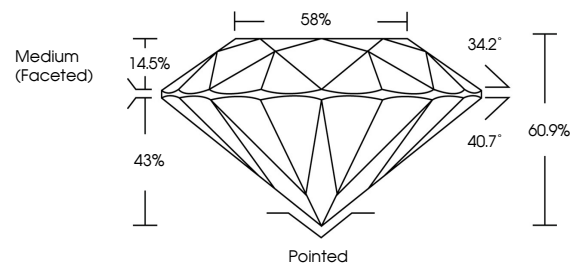
Carat Weight **4.01 CARATS**  
Color Grade **E**  
Clarity Grade **VS 1**  
Cut Grade **IDEAL**

**ADDITIONAL GRADING INFORMATION**

Polish **EXCELLENT**  
Symmetry **EXCELLENT**  
Fluorescence **NONE**  
Inscription(s) **IGI LG761513285**

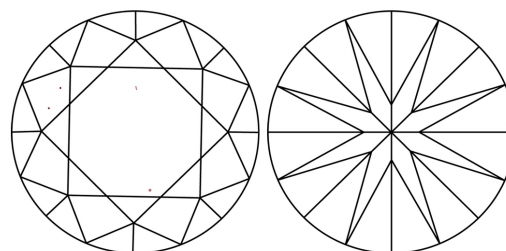
Comments: This Laboratory Grown Diamond was created by Chemical Vapor Deposition (CVD) growth process. Type IIa

**PROPORTIONS**



Sample Image Used

**CLARITY CHARACTERISTICS**



**KEY TO SYMBOLS**

Red symbols indicate internal characteristics.  
Green symbols indicate external characteristics.

**COLOR**

D E F G H I J Faint Very Light Light

**CLARITY**

FL	IF	VS <sup>1-2</sup>	VS <sup>1-2</sup>	SI <sup>1-2</sup>	I <sup>1-3</sup>
Flawless	Internally Flawless	Very Very Slightly Included	Very Slightly Included	Slightly Included	Included

