



**ELECTRONIC COPY**

LG761516483  
Report verification at [igi.org](http://igi.org)



January 15, 2026

IGI Report Number **LG761516483**

Description **LABORATORY GROWN DIAMOND**

Shape and Cutting Style **ROUND BRILLIANT**

Measurements **8.12 - 8.16 X 4.95 MM**

**GRADING RESULTS**

Carat Weight **2.01 CARATS**

Color Grade **E**

Clarity Grade **VVS 2**

Cut Grade **IDEAL**

January 15, 2026

IGI Report Number **LG761516483**

Description **LABORATORY GROWN DIAMOND**

Shape and Cutting Style **ROUND BRILLIANT**

Measurements **8.12 - 8.16 X 4.95 MM**

**GRADING RESULTS**

Carat Weight **2.01 CARATS**

Color Grade **E**

Clarity Grade **VVS 2**

Cut Grade **IDEAL**

**ADDITIONAL GRADING INFORMATION**

Polish **EXCELLENT**

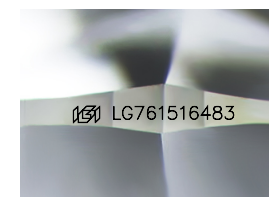
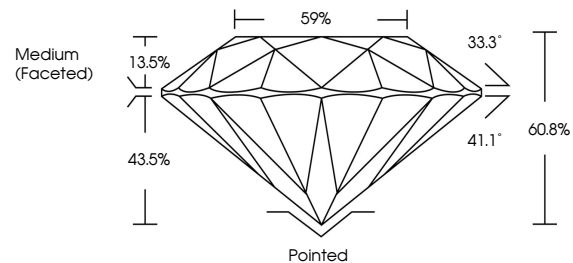
Symmetry **EXCELLENT**

Fluorescence **NONE**

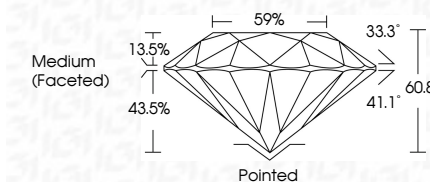
Inscription(s) **LG761516483**

Comments: This Laboratory Grown Diamond was created by Chemical Vapor Deposition (CVD) growth process. Type IIa

**PROPORTIONS**



Sample Image Used



**COLOR**

D E F G H I J Faint Very Light Light

**CLARITY**

FL	IF	VS <sup>1-2</sup>	VS <sup>1-2</sup>	SI <sup>1-2</sup>	I <sup>1-3</sup>
Flawless	Internally Flawless	Very Very Slightly Included	Very Slightly Included	Slightly Included	Included

**ADDITIONAL GRADING INFORMATION**

Polish **EXCELLENT**

Symmetry **EXCELLENT**

Fluorescence **NONE**

Inscription(s) **LG761516483**

Comments: This Laboratory Grown Diamond was created by Chemical Vapor Deposition (CVD) growth process. Type IIa



**IGI**



January 15, 2026	IGI Report No LG761516483	ROUND BRILLIANT	8.12 - 8.16 X 4.95 MM	2.01 CARATS	E	VVS 2	IDEAL	60.8%	59%	Medium (Faceted)	Pointed	EXCELLENT	EXCELLENT	NONE	LG761516483
Carat Weight	Color Grade	Clarity Grade	Depth	Table	Girdle	Culet	Polish	Symmetry	Fluorescence	Inscription(s)	Comments: This Laboratory Grown Diamond was created by Chemical Vapor Deposition (CVD) growth process. Type IIa				