



ELECTRONIC COPY

LG761516902
Report verification at igi.org



January 17, 2026

IGI Report Number **LG761516902**

Description **LABORATORY GROWN DIAMOND**

Shape and Cutting Style **ROUND BRILLIANT**

Measurements **7.56 - 7.58 X 4.59 MM**

GRADING RESULTS

Carat Weight **1.60 CARAT**

Color Grade **E**

Clarity Grade **VVS 2**

Cut Grade **IDEAL**

January 17, 2026

IGI Report Number **LG761516902**

Description **LABORATORY GROWN DIAMOND**

Shape and Cutting Style **ROUND BRILLIANT**

Measurements **7.56 - 7.58 X 4.59 MM**

GRADING RESULTS

Carat Weight **1.60 CARAT**

Color Grade **E**

Clarity Grade **VVS 2**

Cut Grade **IDEAL**

ADDITIONAL GRADING INFORMATION

Polish **EXCELLENT**

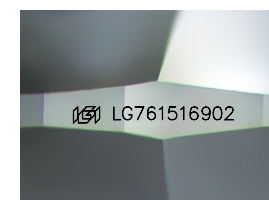
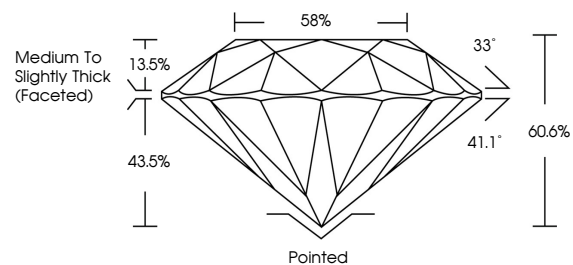
Symmetry **EXCELLENT**

Fluorescence **NONE**

Inscription(s) **IGI LG761516902**

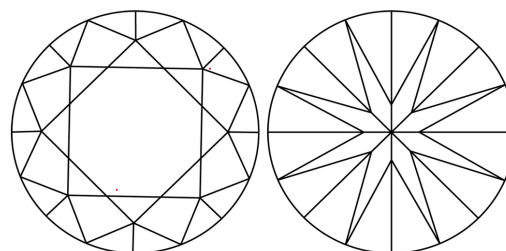
Comments: This Laboratory Grown Diamond was created by Chemical Vapor Deposition (CVD) growth process. Type IIa

PROPORTIONS



Sample Image Used

CLARITY CHARACTERISTICS



KEY TO SYMBOLS

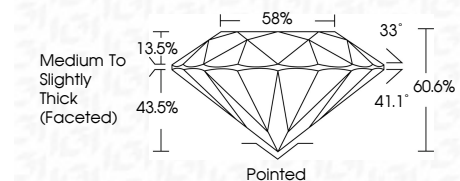
Red symbols indicate internal characteristics.
Green symbols indicate external characteristics.

COLOR

D E F G H I J Faint Very Light Light

CLARITY

FL	IF	VVS ¹⁻²	VS ¹⁻²	SI ¹⁻²	I ¹⁻³
Flawless	Internally Flawless	Very Very Slightly Included	Very Slightly Included	Slightly Included	Included



ADDITIONAL GRADING INFORMATION

Polish **EXCELLENT**

Symmetry **EXCELLENT**

Fluorescence **NONE**

Inscription(s) **IGI LG761516902**

Comments: This Laboratory Grown Diamond was created by Chemical Vapor Deposition (CVD) growth process. Type IIa



IGI



January 17, 2026	IGI Report No LG761516902	1.60 CARAT	E	Pointed	EXCELLENT	EXCELLENT	NONE	IGI LG761516902
ROUND BRILLIANT	7.56 - 7.58 X 4.59 MM	Color Grade	VVS 2	Depth	60.6%	Table	58%	Medium To Slightly Thick (Faceted)
		Clarity Grade	IDEAL	Crown	33°	Polish	EXCELLENT	Pointed
		Cut Grade	IDEAL	Symmetry	EXCELLENT	Symmetry	EXCELLENT	EXCELLENT
				Fluorescence	NONE	Fluorescence	NONE	NONE
				Inscription(s)	IGI LG761516902	Inscription(s)		

Comments: This Laboratory Grown Diamond was created by Chemical Vapor Deposition (CVD) growth process. Type IIa