



ELECTRONIC COPY

LG761520721
Report verification at igi.org



December 30, 2025
IGI Report Number LG761520721
Description LABORATORY GROWN DIAMOND
Shape and Cutting Style ROUND BRILLIANT
Measurements 8.54 - 8.62 X 5.32 MM
GRADING RESULTS
Carat Weight 2.43 CARATS
Color Grade D
Clarity Grade VS 1
Cut Grade EXCELLENT

December 30, 2025
IGI Report Number LG761520721
Description LABORATORY GROWN DIAMOND
Shape and Cutting Style ROUND BRILLIANT
Measurements 8.54 - 8.62 X 5.32 MM

GRADING RESULTS

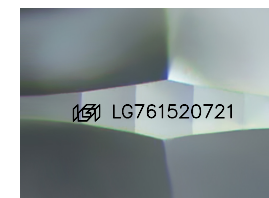
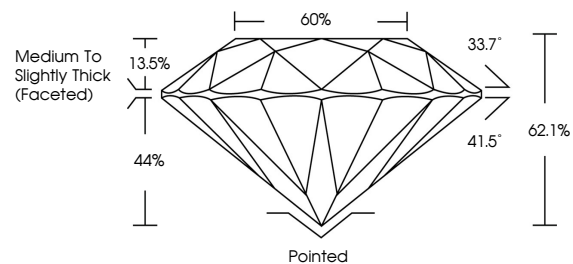
Carat Weight 2.43 CARATS
Color Grade D
Clarity Grade VS 1
Cut Grade EXCELLENT

ADDITIONAL GRADING INFORMATION

Polish EXCELLENT
Symmetry EXCELLENT
Fluorescence NONE
Inscription(s) IGI LG761520721

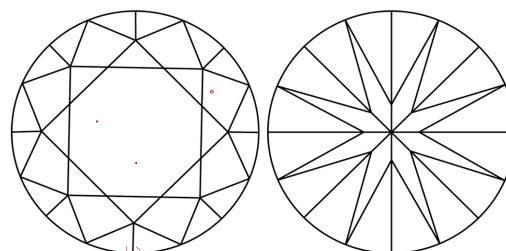
Comments: This Laboratory Grown Diamond was created by Chemical Vapor Deposition (CVD) growth process. Type IIa

PROPORTIONS



Sample Image Used

CLARITY CHARACTERISTICS



KEY TO SYMBOLS

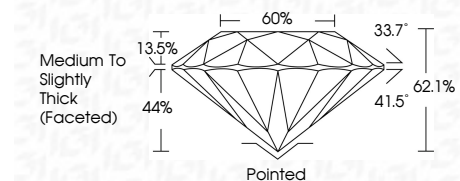
Red symbols indicate internal characteristics.
Green symbols indicate external characteristics.

COLOR

D E F G H I J Faint Very Light Light

CLARITY

FL IF VS 1-2 VS 2-3 SI 1-2 I 1-3
Flawless Internally Flawless Very Very Slightly Included Very Slightly Included Slightly Included Included



ADDITIONAL GRADING INFORMATION

Polish EXCELLENT
Symmetry EXCELLENT
Fluorescence NONE
Inscription(s) IGI LG761520721
Comments: This Laboratory Grown Diamond was created by Chemical Vapor Deposition (CVD) growth process. Type IIa



December 30, 2025
IGI Report No LG761520721
ROUND BRILLIANT
8.54 - 8.62 X 5.32 MM
2.43 CARATS
Color Grade D
Clarity Grade VS 1
Depth 62.1%
Table 60%
Girdle Medium To Slightly Thick (Faceted)
Culet Pointed
Polish EXCELLENT
Symmetry EXCELLENT
Fluorescence NONE
Inscription(s) IGI LG761520721
Comments: This Laboratory Grown Diamond was created by Chemical Vapor Deposition (CVD) growth process. Type IIa