



**ELECTRONIC COPY**

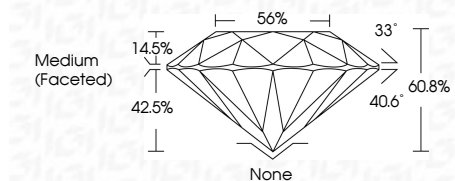
LG761532330  
Report verification at igi.org



January 2, 2026  
IGI Report Number **LG761532330**  
Description **LABORATORY GROWN DIAMOND**  
Shape and Cutting Style **ROUND BRILLIANT**  
Measurements **8.10 - 8.12 X 4.93 MM**

**GRADING RESULTS**

Carat Weight **1.99 CARAT**  
Color Grade **F**  
Clarity Grade **VS 1**  
Cut Grade **IDEAL**

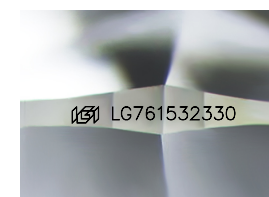


**ADDITIONAL GRADING INFORMATION**

Polish **EXCELLENT**  
Symmetry **EXCELLENT**  
Fluorescence **NONE**  
Inscription(s) **IGI LG761532330**  
Comments: This Laboratory Grown Diamond was created by Chemical Vapor Deposition (CVD) growth process. Type IIa

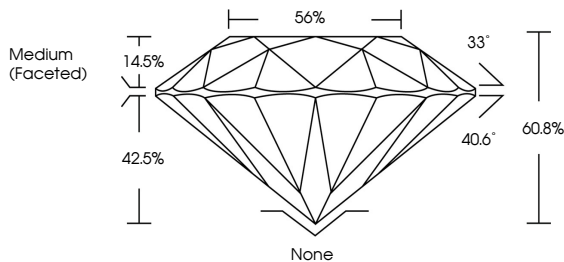


January 2, 2026  
IGI Report No LG761532330  
**ROUND BRILLIANT**  
8.10 - 8.12 X 4.93 MM  
1.99 CARAT  
Color Grade **F**  
Clarity Grade **VS 1**  
Depth **60.8%**  
Table **56%**  
Girdle **None (Faceted)**  
Culet **None**  
Polish **EXCELLENT**  
Symmetry **EXCELLENT**  
Fluorescence **NONE**  
Inscription(s) **IGI LG761532330**  
Comments: This Laboratory Grown Diamond was created by Chemical Vapor Deposition (CVD) growth process. Type IIa

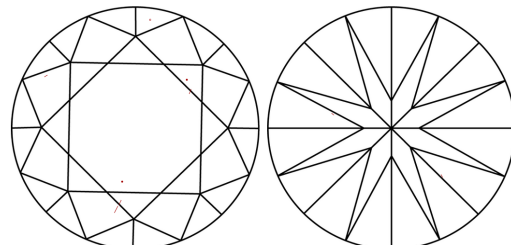


Sample Image Used

**PROPORTIONS**



**CLARITY CHARACTERISTICS**



**KEY TO SYMBOLS**

Red symbols indicate internal characteristics.  
Green symbols indicate external characteristics.

**COLOR**

D E F G H I J Faint Very Light Light

**CLARITY**

FL	IF	VS <sup>1-2</sup>	VS <sup>1-2</sup>	SI <sup>1-2</sup>	I <sup>1-3</sup>
Flawless	Internally Flawless	Very Very Slightly Included	Very Slightly Included	Slightly Included	Included

