



LABORATORY GROWN DIAMOND REPORT

December 31, 2025
 IGI Report Number **LG761537480**
 Description **LABORATORY GROWN DIAMOND**
 Shape and Cutting Style **PRINCESS CUT**
 Measurements **3.77 X 3.63 X 2.64 MM**

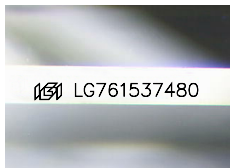
GRADING RESULTS

Carat Weight **0.32 CARAT**
 Color Grade **E**
 Clarity Grade **VVS 1**

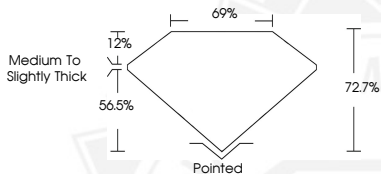
ADDITIONAL GRADING INFORMATION

Polish **EXCELLENT**
 Symmetry **EXCELLENT**
 Fluorescence **NONE**
 Inscription(s) **IGI LG761537480**

Comments: As Grown - No indication of post-growth treatment. This Laboratory Grown Diamond was created by High Pressure High Temperature (HPHT) growth process. Type II



Sample Image Used



December 31, 2025
 IGI Report Number **LG761537480**
PRINCESS CUT
LABORATORY GROWN DIAMOND
3.77 X 3.63 X 2.64 MM
 Carat Weight **0.32 CARAT**
 Color Grade **E**
 Clarity Grade **VVS 1**
 Polish **EXCELLENT**
 Symmetry **EXCELLENT**
 Fluorescence **NONE**
 Inscription(s) **IGI LG761537480**

Comments: As Grown - No indication of post-growth treatment. This Laboratory Grown Diamond was created by High Pressure High Temperature (HPHT) growth process. Type II



December 31, 2025
 IGI Report Number **LG761537480**
PRINCESS CUT
LABORATORY GROWN DIAMOND
3.77 X 3.63 X 2.64 MM
 Carat Weight **0.32 CARAT**
 Color Grade **E**
 Clarity Grade **VVS 1**
 Polish **EXCELLENT**
 Symmetry **EXCELLENT**
 Fluorescence **NONE**
 Inscription(s) **IGI LG761537480**

Comments: As Grown - No indication of post-growth treatment. This Laboratory Grown Diamond was created by High Pressure High Temperature (HPHT) growth process. Type II

THIS DOCUMENT WAS PRODUCED WITH THE FOLLOWING SECURITY MEASURES: SPECIAL DOCUMENT PAPER, INK SCREENS, WATERMARK, BACKGROUND DESIGNS, HOLOGRAM AND OTHER SECURITY FEATURES NOT LISTED AND DO EXCEED DOCUMENT SECURITY INDUSTRY GUIDELINES.