



ELECTRONIC COPY

LG761539985
Report verification at igi.org



January 20, 2026

IGI Report Number **LG761539985**

Description **LABORATORY GROWN DIAMOND**

Shape and Cutting Style **ROUND BRILLIANT**

Measurements **9.46 - 9.49 X 5.78 MM**

GRADING RESULTS

Carat Weight **3.19 CARATS**

Color Grade **E**

Clarity Grade **VVS 2**

Cut Grade **IDEAL**

January 20, 2026

IGI Report Number **LG761539985**

Description **LABORATORY GROWN DIAMOND**

Shape and Cutting Style **ROUND BRILLIANT**

Measurements **9.46 - 9.49 X 5.78 MM**

GRADING RESULTS

Carat Weight **3.19 CARATS**

Color Grade **E**

Clarity Grade **VVS 2**

Cut Grade **IDEAL**

ADDITIONAL GRADING INFORMATION

Polish **EXCELLENT**

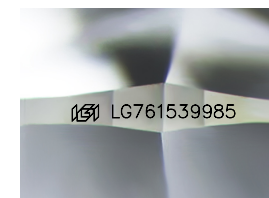
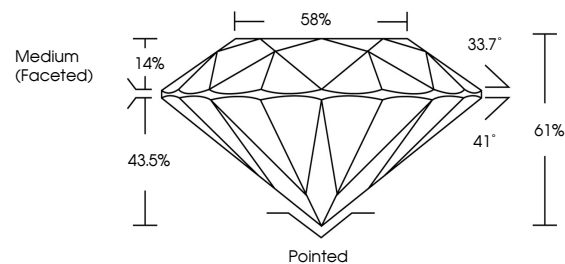
Symmetry **EXCELLENT**

Fluorescence **NONE**

Inscription(s) **LG761539985**

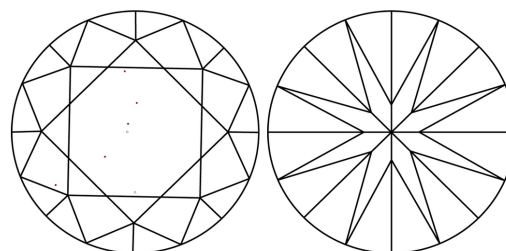
Comments: This Laboratory Grown Diamond was created by Chemical Vapor Deposition (CVD) growth process.
Type IIa

PROPORTIONS



Sample Image Used

CLARITY CHARACTERISTICS



KEY TO SYMBOLS

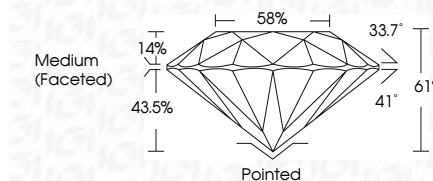
Red symbols indicate internal characteristics.
Green symbols indicate external characteristics.

COLOR

D E F G H I J Faint Very Light Light

CLARITY

| FL | IF | VVS ¹⁻² | VS ¹⁻² | SI ¹⁻² | I ¹⁻³ |
|----------|---------------------|-----------------------------|------------------------|-------------------|------------------|
| Flawless | Internally Flawless | Very Very Slightly Included | Very Slightly Included | Slightly Included | Included |



ADDITIONAL GRADING INFORMATION

Polish **EXCELLENT**

Symmetry **EXCELLENT**

Fluorescence **NONE**

Inscription(s) **LG761539985**

Comments: This Laboratory Grown Diamond was created by Chemical Vapor Deposition (CVD) growth process.
Type IIa



IGI



| | | | | | | | | | | | | | |
|------------------|---------------------------|--------------|-------------|---------------|-----------|--------|-------|------------------|---------|-----------|-----------|--------------|----------------|
| January 20, 2026 | IGI Report No LG761539985 | 3.19 CARATS | E | VVS 2 | IDEAL | 61% | 58% | Medium (Faceted) | Pointed | EXCELLENT | EXCELLENT | NONE | LG761539985 |
| ROUND BRILLIANT | 9.46 - 9.49 X 5.78 MM | Color Grade | Cut Grade | Depth | Table | Girdle | | | | | | | |
| | | Carat Weight | Color Grade | Clarity Grade | Cut Grade | Depth | Table | Girdle | Culet | Polish | Symmetry | Fluorescence | Inscription(s) |
| | | | | | | | | | | | | | |

Comments: This Laboratory Grown Diamond was created by Chemical Vapor Deposition (CVD) growth process.
Type IIa