



ELECTRONIC COPY

LG761546259
Report verification at igi.org



January 31, 2026

IGI Report Number **LG761546259**

Description **LABORATORY GROWN DIAMOND**

Shape and Cutting Style **ROUND BRILLIANT**

Measurements **10.93 - 11.04 X 6.62 MM**

GRADING RESULTS

Carat Weight **5.01 CARATS**

Color Grade **FANCY VIVID BLUE**

Clarity Grade **SI 1**

Cut Grade **IDEAL**

January 31, 2026
IGI Report Number **LG761546259**
Description **LABORATORY GROWN DIAMOND**
Shape and Cutting Style **ROUND BRILLIANT**
Measurements **10.93 - 11.04 X 6.62 MM**

GRADING RESULTS

Carat Weight **5.01 CARATS**

Color Grade **FANCY VIVID BLUE**

Clarity Grade **SI 1**

Cut Grade **IDEAL**

ADDITIONAL GRADING INFORMATION

Polish **EXCELLENT**

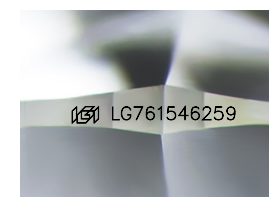
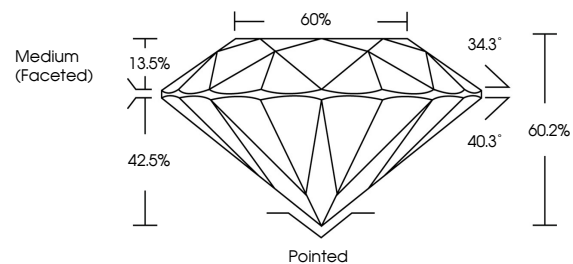
Symmetry **EXCELLENT**

Fluorescence **NONE**

Inscription(s) **IGI LG761546259**

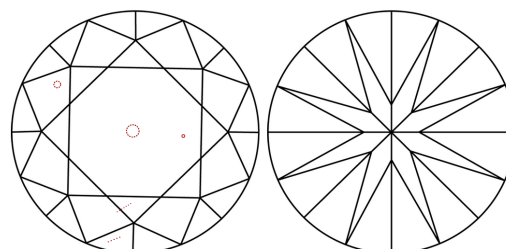
Comments: This Laboratory Grown Diamond was created by Chemical Vapor Deposition (CVD) growth process.
Indications of post-growth treatment.

PROPORTIONS



Sample Image Used

CLARITY CHARACTERISTICS



KEY TO SYMBOLS

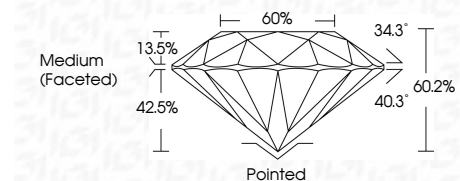
Red symbols indicate internal characteristics.
Green symbols indicate external characteristics.

COLOR

D E F G H I J Faint Very Light Light

CLARITY

FL	IF	VS ¹⁻²	VS ¹⁻²	SI ¹⁻²	I ¹⁻³
Flawless	Internally Flawless	Very Very Slightly Included	Very Slightly Included	Slightly Included	Included



ADDITIONAL GRADING INFORMATION

Polish **EXCELLENT**

Symmetry **EXCELLENT**

Fluorescence **NONE**

Inscription(s) **IGI LG761546259**

Comments: This Laboratory Grown Diamond was created by Chemical Vapor Deposition (CVD) growth process.
Indications of post-growth treatment.



IGI



January 31, 2026	IGI Report No LG761546259	ROUND BRILLIANT	5.01 CARATS	FANCY VIVID BLUE	SI 1	IDEAL	60.2%	Medium (Faceted)	Pointed	EXCELLENT	EXCELLENT	NONE	IGI LG761546259
Carat Weight	Color Grade	Clarity Grade	Depth	Table	Girdle	Culet	Polish	Symmetry	Fluorescence	Inscription(s)	Comments: This Laboratory Grown Diamond was created by Chemical Vapor Deposition (CVD) growth process. Indications of post-growth treatment.		