



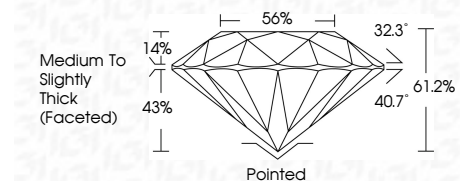
ELECTRONIC COPY

LG761552025
Report verification at igi.org



January 31, 2026
IGI Report Number LG761552025
Description LABORATORY GROWN DIAMOND
Shape and Cutting Style ROUND BRILLIANT
Measurements 8.10 - 8.17 X 4.98 MM

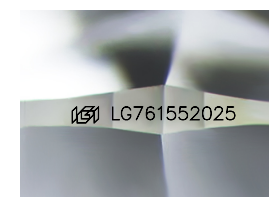
GRADING RESULTS
Carat Weight 2.05 CARATS
Color Grade G
Clarity Grade VS 1
Cut Grade EXCELLENT



ADDITIONAL GRADING INFORMATION
Polish EXCELLENT
Symmetry VERY GOOD
Fluorescence NONE
Inscription(s) LG761552025
Comments: This Laboratory Grown Diamond was created by Chemical Vapor Deposition (CVD) growth process. Type IIa

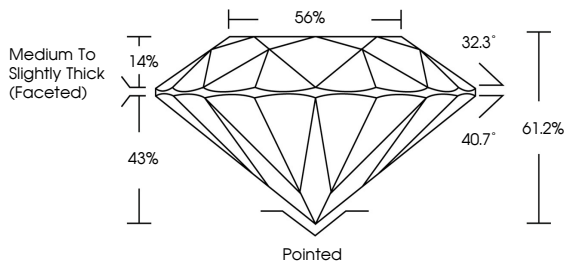


January 31, 2026
IGI Report No LG761552025
ROUND BRILLIANT
8.10 - 8.17 X 4.98 MM
2.05 CARATS
Color Grade G
Clarity Grade VS 1
Depth 61.2%
Table 56%
Medium To Slightly Thick (Faceted)
Cutler Pointed
Polish EXCELLENT
Symmetry VERY GOOD
Fluorescence NONE
Inscription(s) LG761552025
Comments: This Laboratory Grown Diamond was created by Chemical Vapor Deposition (CVD) growth process. Type IIa

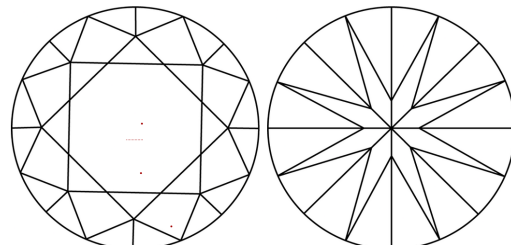


Sample Image Used

PROPORTIONS



CLARITY CHARACTERISTICS



KEY TO SYMBOLS
Red symbols indicate internal characteristics.
Green symbols indicate external characteristics.

COLOR

Table with color grades: D, E, F, G, H, I, J, Faint, Very Light, Light

CLARITY

Table with clarity grades: FL, IF, VS 1-2, VS 1-2, SI 1-2, I 1-3, Flawless, Internally Flawless, Very Very Slightly Included, Very Slightly Included, Slightly Included, Included



January 31, 2026
IGI Report Number LG761552025
Description LABORATORY GROWN DIAMOND
Shape and Cutting Style ROUND BRILLIANT
Measurements 8.10 - 8.17 X 4.98 MM

GRADING RESULTS
Carat Weight 2.05 CARATS
Color Grade G
Clarity Grade VS 1
Cut Grade EXCELLENT

ADDITIONAL GRADING INFORMATION
Polish EXCELLENT
Symmetry VERY GOOD
Fluorescence NONE
Inscription(s) LG761552025

Comments: This Laboratory Grown Diamond was created by Chemical Vapor Deposition (CVD) growth process. Type IIa