



ELECTRONIC COPY

LG761554427
Report verification at igi.org



February 28, 2026

IGI Report Number **LG761554427**

Description **LABORATORY GROWN DIAMOND**

Shape and Cutting Style **ROUND BRILLIANT**

Measurements **6.89 - 6.93 X 4.14 MM**

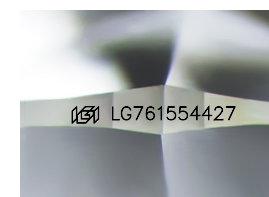
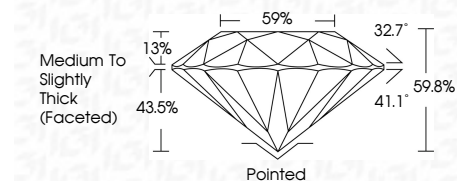
GRADING RESULTS

Carat Weight **1.20 CARAT**

Color Grade **D**

Clarity Grade **VVS 1**

Cut Grade **IDEAL**



Sample Image Used

ADDITIONAL GRADING INFORMATION

Polish **EXCELLENT**

Symmetry **EXCELLENT**

Fluorescence **NONE**

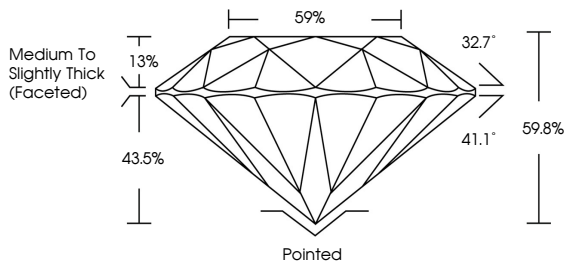
Inscription(s) **IGI LG761554427**

Comments: As Grown - No indication of post-growth treatment.
This Laboratory Grown Diamond was created by High Pressure High Temperature (HPHT) growth process.
Type II

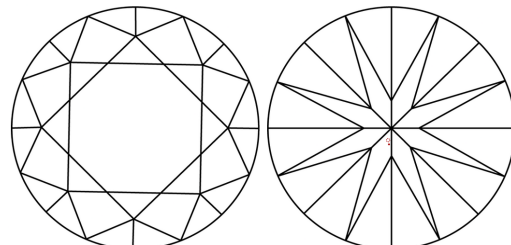


February 28, 2026	IGI Report No LG761554427	1.20 CARAT	D
ROUND BRILLIANT	6.89 - 6.93 X 4.14 MM	VVS 1	IDEAL
Carat Weight	Color Grade	Clarity Grade	Depth
1.20 CARAT	D	VVS 1	43.5%
Color Grade	Clarity Grade	Cut Grade	Table
D	VVS 1	IDEAL	59%
Clarity Grade	Depth	Table	Grille
VVS 1	43.5%	59%	Medium To Slightly Thick (Faceted)
Depth	Table	Grille	Culet
43.5%	59%	Medium To Slightly Thick (Faceted)	Pointed
Table	Grille	Culet	Polish
59%	Medium To Slightly Thick (Faceted)	Pointed	EXCELLENT
Medium To Slightly Thick (Faceted)	Culet	Polish	EXCELLENT
Pointed	Polish	Symmetry	EXCELLENT
EXCELLENT	Symmetry	Fluorescence	NONE
EXCELLENT	Fluorescence	Inscription(s)	IGI LG761554427
NONE	Inscription(s)	Comments:	As Grown - No indication of post-growth treatment.
IGI LG761554427	Comments:	This Laboratory Grown Diamond was created by High Pressure High Temperature (HPHT) growth process.	Type II

PROPORTIONS



CLARITY CHARACTERISTICS



KEY TO SYMBOLS

Red symbols indicate internal characteristics.
Green symbols indicate external characteristics.

COLOR

D	E	F	G	H	I	J	Faint	Very Light	Light
---	---	---	---	---	---	---	-------	------------	-------

CLARITY

FL	IF	VVS ¹⁻²	VS ¹⁻²	SI ¹⁻²	I ¹⁻³
Flawless	Internally Flawless	Very Very Slightly Included	Very Slightly Included	Slightly Included	Included

