



ELECTRONIC COPY

LG761559434
Report verification at igi.org



February 12, 2026

IGI Report Number **LG761559434**

Description **LABORATORY GROWN DIAMOND**

Shape and Cutting Style **ROUND BRILLIANT**

Measurements **6.45 - 6.48 X 3.93 MM**

GRADING RESULTS

Carat Weight **1.01 CARAT**

Color Grade **D**

Clarity Grade **VVS 2**

Cut Grade **IDEAL**

February 12, 2026
IGI Report Number **LG761559434**
Description **LABORATORY GROWN DIAMOND**
Shape and Cutting Style **ROUND BRILLIANT**
Measurements **6.45 - 6.48 X 3.93 MM**

GRADING RESULTS

Carat Weight **1.01 CARAT**

Color Grade **D**

Clarity Grade **VVS 2**

Cut Grade **IDEAL**

ADDITIONAL GRADING INFORMATION

Polish **EXCELLENT**

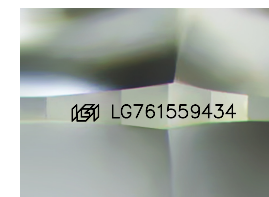
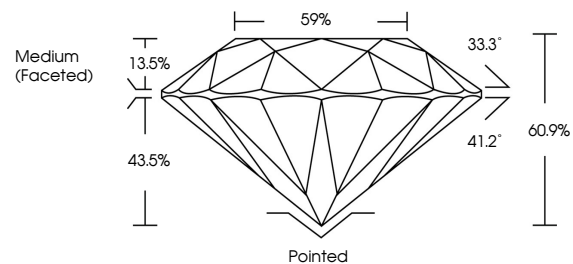
Symmetry **EXCELLENT**

Fluorescence **NONE**

Inscription(s) **LG761559434**

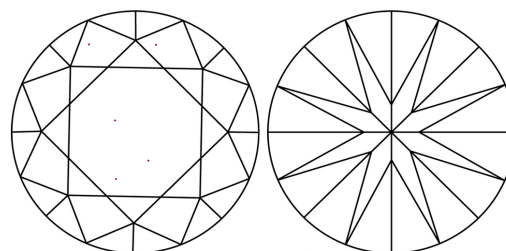
Comments: This Laboratory Grown Diamond was created by Chemical Vapor Deposition (CVD) growth process.
Type IIa

PROPORTIONS



Sample Image Used

CLARITY CHARACTERISTICS



KEY TO SYMBOLS

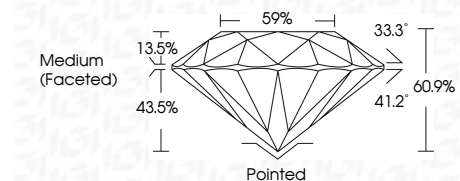
Red symbols indicate internal characteristics.
Green symbols indicate external characteristics.

COLOR

D E F G H I J Faint Very Light Light

CLARITY

FL	IF	VVS ¹⁻²	VS ¹⁻²	SI ¹⁻²	I ¹⁻³
Flawless	Internally Flawless	Very Very Slightly Included	Very Slightly Included	Slightly Included	Included



ADDITIONAL GRADING INFORMATION

Polish **EXCELLENT**

Symmetry **EXCELLENT**

Fluorescence **NONE**

Inscription(s) **LG761559434**

Comments: This Laboratory Grown Diamond was created by Chemical Vapor Deposition (CVD) growth process.
Type IIa



IGI



February 12, 2026	1.01 CARAT	D	Pointed
IGI Report No LG761559434	EXCELLENT	VVS 2	EXCELLENT
ROUND BRILLIANT	EXCELLENT	IDEAL	EXCELLENT
6.45 - 6.48 X 3.93 MM	EXCELLENT	60.9%	NONE
Color Grade	EXCELLENT	Medium (Faceted)	None
Clarity Grade	EXCELLENT		
Cut Grade	EXCELLENT		
Depth	EXCELLENT		
Table	EXCELLENT		
Girdle	EXCELLENT		
Culet	EXCELLENT		
Polish	EXCELLENT		
Symmetry	EXCELLENT		
Fluorescence	EXCELLENT		
Inscription(s)	EXCELLENT		
	EXCELLENT		

Comments: This Laboratory Grown Diamond was created by Chemical Vapor Deposition (CVD) growth process.
Type IIa