



ELECTRONIC COPY

LG761560086
Report verification at igi.org



February 27, 2026

IGI Report Number **LG761560086**

Description **LABORATORY GROWN DIAMOND**

Shape and Cutting Style **ROUND BRILLIANT**

Measurements **8.68 - 8.72 X 5.36 MM**

GRADING RESULTS

Carat Weight **2.51 CARATS**

Color Grade **FANCY INTENSE BLUE**

Clarity Grade **VS 1**

Cut Grade **IDEAL**

February 27, 2026

IGI Report Number **LG761560086**

Description **LABORATORY GROWN DIAMOND**

Shape and Cutting Style **ROUND BRILLIANT**

Measurements **8.68 - 8.72 X 5.36 MM**

GRADING RESULTS

Carat Weight **2.51 CARATS**

Color Grade **FANCY INTENSE BLUE**

Clarity Grade **VS 1**

Cut Grade **IDEAL**

ADDITIONAL GRADING INFORMATION

Polish **EXCELLENT**

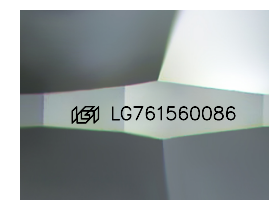
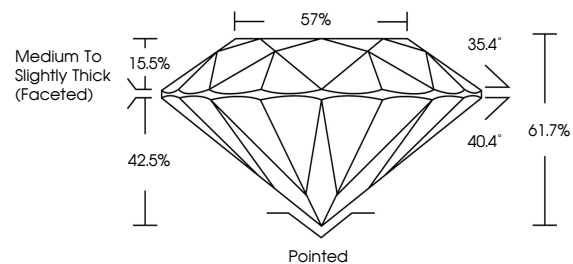
Symmetry **EXCELLENT**

Fluorescence **NONE**

Inscription(s) **IGI LG761560086**

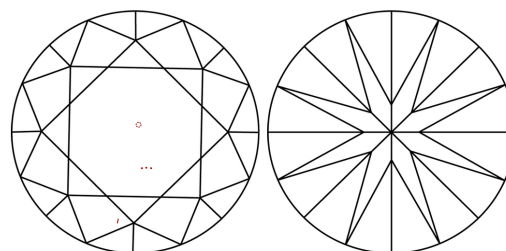
Comments: This Laboratory Grown Diamond was created by High Pressure High Temperature (HPHT) growth process.
Indications of post-growth treatment.

PROPORTIONS



Sample Image Used

CLARITY CHARACTERISTICS



KEY TO SYMBOLS

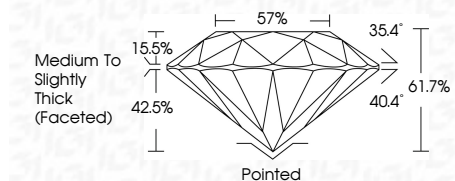
Red symbols indicate internal characteristics.
Green symbols indicate external characteristics.

COLOR

D E F G H I J Faint Very Light Light

CLARITY

| FL | IF | VS ¹⁻² | VS ¹⁻² | SI ¹⁻² | I ¹⁻³ |
|----------|---------------------|-----------------------------|------------------------|-------------------|------------------|
| Flawless | Internally Flawless | Very Very Slightly Included | Very Slightly Included | Slightly Included | Included |



ADDITIONAL GRADING INFORMATION

Polish **EXCELLENT**

Symmetry **EXCELLENT**

Fluorescence **NONE**

Inscription(s) **IGI LG761560086**

Comments: This Laboratory Grown Diamond was created by High Pressure High Temperature (HPHT) growth process.
Indications of post-growth treatment.



IGI



| | | | | | | | | | | | | |
|-------------------|---------------------------|--------------|--------------------|---------------|-----------|-------|------------------------------------|---------|-----------|-----------|--------------|-----------------|
| February 27, 2026 | IGI Report No LG761560086 | 2.51 CARATS | FANCY INTENSE BLUE | VS 1 | IDEAL | 57% | Medium To Slightly Thick (Faceted) | Pointed | EXCELLENT | EXCELLENT | NONE | IGI LG761560086 |
| ROUND BRILLIANT | 8.68 - 8.72 X 5.36 MM | Carat Weight | Color Grade | Clarity Grade | Cut Grade | Depth | Table | Girdle | Polish | Symmetry | Fluorescence | Inscription(s) |

Comments: This Laboratory Grown Diamond was created by High Pressure High Temperature (HPHT) growth process.
Indications of post-growth treatment.