



**ELECTRONIC COPY**

## LABORATORY GROWN DIAMOND REPORT

LG761561880  
Report verification at [igi.org](https://igi.org)

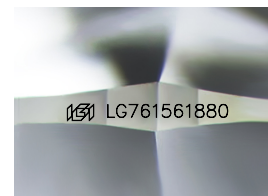
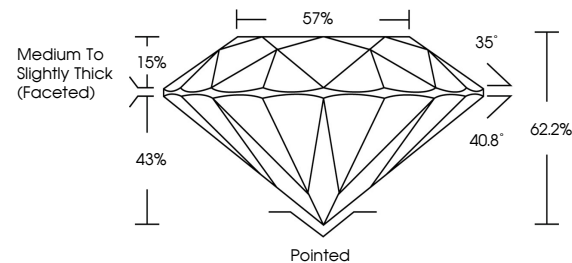
January 8, 2026	
IGI Report Number	LG761561880
Description	LABORATORY GROWN DIAMOND
Shape and Cutting Style	ROUND BRILLIANT
Measurements	6.89 - 6.93 X 4.30 MM
GRADING RESULTS	
Carat Weight	1.27 CARAT
Color Grade	D
Clarity Grade	VS 1
Cut Grade	IDEAL

### ADDITIONAL GRADING INFORMATION

Polish	EXCELLENT
Symmetry	EXCELLENT
Fluorescence	NONE
Inscription(s)	 LG761561880

Comments: As Grown - No indication of post-growth treatment.  
This Laboratory Grown Diamond was created by High Pressure High Temperature (HPHT) growth process.  
Type II

## PROPORTIONS



Sample Image Used

**COLOR**

D E F G H I J Faint Very Light Light

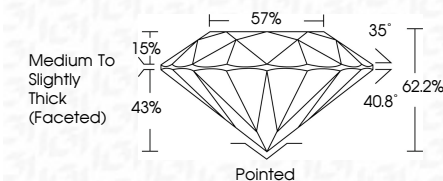
## CLARITY

FL	IF	VVS <sup>1-2</sup>	VS <sup>1-2</sup>	SI <sup>1-2</sup>	I <sup>1-3</sup>
Flawless	Internally Flawless	Very Very Slightly Included	Very Slightly Included	Slightly Included	Included


## LABORATORY GROWN DIAMOND REPORT



January 8, 2026	
IGI Report Number	LG761561880
Description	LABORATORY GROWN DIAMOND
Shape and Cutting Style	ROUND BRILLIANT
Measurements	6.89 - 6.93 X 4.30 MM
GRADING RESULTS	
Carat Weight	1.27 CARAT
Color Grade	D
Clarity Grade	VS 1
Cut Grade	IDEAL



### ADDITIONAL GRADING INFORMATION

Polish	EXCELLENT
Symmetry	EXCELLENT
Fluorescence	NONE
Inscription(s)	 LG761561880
Comments: As Grown - No indication of post-growth treatment.	
This Laboratory Grown Diamond was created by High Pressure High Temperature (HPHT) growth process.	
Type II	



IG



© IGI 2020, International Gemological Institute

FD - 10 20



THIS DOCUMENT WAS PRODUCED WITH THE FOLLOWING SECURITY MEASURES: SPECIAL DOCUMENT PAPER, INK SCREENS, WATERMARK, BACKGROUND DESIGNS, HOLOGRAM, AND OTHER SECURITY FEATURES NOT LISTED AND DO EXCEED DOCUMENT SECURITY INDUSTRY GUIDELINES.

**www.igi.org**

January 8, 2026  
IGI Report No LG7  
ROUND BRILLIANT

6.89 - 6.93 X 4.30 MM

0.89 - 0.98 X 4.30 MM  
Carat Weight  
1.27 CARAT

Color Grade **D**

	VS 1	IDEAL
Clarity Grade		
Cut Grade		

Cut Grade	IDEAL
Depth	62.2%

Depin	62.2%
Table	57%

Girdle

	Culet	Pointed
	Illuck (ruined)	

	Pointed	EXCELLENT
Cullet		
Polish		

Symmetry	EXCELLENT
Fluorescence	NONE

Fluorescence	NONE
Inscription(s)	1971 LG761561880

Comments:

Comments:  
As Grown - No Indication of post-growth  
treatment

**treatment.** This Laboratory Grown Diamond was created by High Pressure High

**Type II**  
created by High Pressure High  
Temperature (HPHT) growth process.

Type II