



**ELECTRONIC COPY**

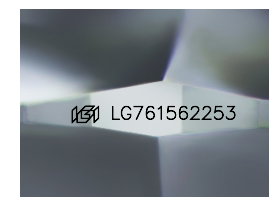
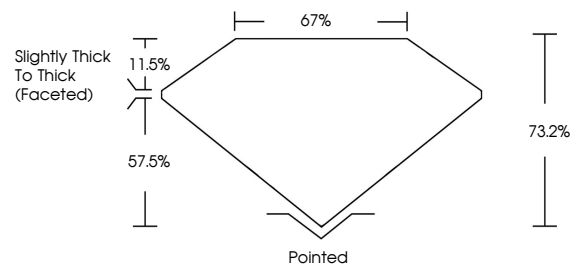
LG761562253  
Report verification at igi.org



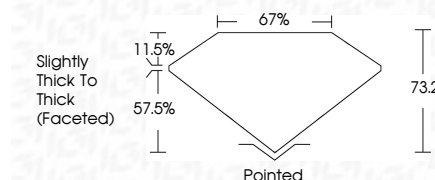
January 8, 2026  
IGI Report Number **LG761562253**  
Description **LABORATORY GROWN DIAMOND**  
Shape and Cutting Style **SQUARE CUSHION MODIFIED BRILLIANT**  
Measurements **6.61 X 6.52 X 4.77 MM**  
**GRADING RESULTS**  
Carat Weight **1.63 CARAT**  
Color Grade **E**  
Clarity Grade **VVS 2**

January 8, 2026  
IGI Report Number **LG761562253**  
Description **LABORATORY GROWN DIAMOND**  
Shape and Cutting Style **SQUARE CUSHION MODIFIED BRILLIANT**  
Measurements **6.61 X 6.52 X 4.77 MM**  
**GRADING RESULTS**  
Carat Weight **1.63 CARAT**  
Color Grade **E**  
Clarity Grade **VVS 2**

**PROPORTIONS**



Sample Image Used



**ADDITIONAL GRADING INFORMATION**

Polish **EXCELLENT**  
Symmetry **EXCELLENT**  
Fluorescence **NONE**  
Inscription(s) **IGI LG761562253**

Comments: This Laboratory Grown Diamond was created by Chemical Vapor Deposition (CVD) growth process. Type IIa

**ADDITIONAL GRADING INFORMATION**

Polish **EXCELLENT**  
Symmetry **EXCELLENT**  
Fluorescence **NONE**  
Inscription(s) **IGI LG761562253**  
Comments: This Laboratory Grown Diamond was created by Chemical Vapor Deposition (CVD) growth process. Type IIa

**COLOR**

D E F G H I J Faint Very Light Light

**CLARITY**

FL	IF	VVS <sup>1-2</sup>	VS <sup>1-2</sup>	SI <sup>1-2</sup>	I <sup>1-3</sup>
Flawless	Internally Flawless	Very Very Slightly Included	Very Slightly Included	Slightly Included	Included



**IGI**



January 8, 2026  
IGI Report No **LG761562253**  
**SQUARE CUSHION MODIFIED BRILLIANT**  
**6.61 X 6.52 X 4.77 MM**  
Carat Weight **1.63 CARAT**  
Color Grade **E**  
Clarity Grade **VVS 2**  
Depth **73.2%**  
Table **67%**  
Girdle **Slightly Thick To Thick (Faceted)**  
Culet **Pointed**  
Polish **EXCELLENT**  
Symmetry **EXCELLENT**  
Fluorescence **NONE**  
Inscription(s) **IGI LG761562253**  
Comments: This Laboratory Grown Diamond was created by Chemical Vapor Deposition (CVD) growth process. Type IIa