



# INTERNATIONAL GEMOLOGICAL INSTITUTE

ELECTRONIC COPY



December 29, 2025

IGI Report Number LG761563079

ROUND BRILLIANT  
LABORATORY GROWN DIAMOND  
4.18 - 4.20 X 2.52 MM

Carat Weight 0.27 CARAT  
Color Grade D  
Clarity Grade VVS 1  
Cut Grade IDEAL  
Polish EXCELLENT  
Symmetry EXCELLENT  
Fluorescence NONE  
Inscription(s) IGI LG761563079

Comments: This Laboratory Grown Diamond was created by Chemical Vapor Deposition (CVD) growth process. Type IIa

## LABORATORY GROWN DIAMOND REPORT

December 29, 2025

IGI Report Number LG761563079

Description LABORATORY GROWN DIAMOND

Shape and Cutting Style ROUND BRILLIANT

Measurements 4.18 - 4.20 X 2.52 MM

### GRADING RESULTS

Carat Weight 0.27 CARAT

Color Grade D

Clarity Grade VVS 1

Cut Grade IDEAL

### ADDITIONAL GRADING INFORMATION

Polish EXCELLENT

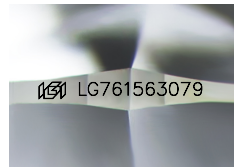
Symmetry EXCELLENT

Fluorescence NONE

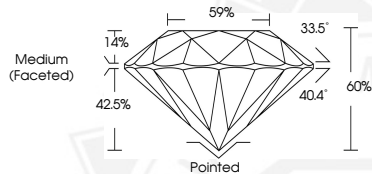
Inscription(s) IGI LG761563079

Comments: This Laboratory Grown Diamond was created by Chemical Vapor Deposition (CVD) growth process.

Type IIa



Sample Image Used



December 29, 2025

IGI Report Number LG761563079

ROUND BRILLIANT  
LABORATORY GROWN DIAMOND  
4.18 - 4.20 X 2.52 MM

Carat Weight 0.27 CARAT  
Color Grade D  
Clarity Grade VVS 1  
Cut Grade IDEAL  
Polish EXCELLENT  
Symmetry EXCELLENT  
Fluorescence NONE  
Inscription(s) IGI LG761563079

Comments: This Laboratory Grown Diamond was created by Chemical Vapor Deposition (CVD) growth process. Type IIa



THIS DOCUMENT WAS PRODUCED WITH THE FOLLOWING SECURITY MEASURES: SPECIAL DOCUMENT PAPER, INK SCREENS, WATERMARK, BACKGROUND DESIGNS, HOLOGRAM AND OTHER SECURITY FEATURES NOT LISTED AND DO EXCEED DOCUMENT SECURITY INDUSTRY GUIDELINES.

For terms & conditions and to verify this report, please visit [www.igi.org](http://www.igi.org)