



ELECTRONIC COPY

LG762501175
Report verification at igi.org



December 29, 2025

IGI Report Number LG762501175

Description LABORATORY GROWN DIAMOND

Shape and Cutting Style CUT CORNERED RECTANGULAR MODIFIED BRILLIANT

Measurements 10.34 X 7.08 X 4.77 MM

GRADING RESULTS

Carat Weight 3.06 CARATS

Color Grade E

Clarity Grade VS 1

December 29, 2025
IGI Report Number LG762501175
Description LABORATORY GROWN DIAMOND
Shape and Cutting Style CUT CORNERED RECTANGULAR MODIFIED BRILLIANT
Measurements 10.34 X 7.08 X 4.77 MM

GRADING RESULTS

Carat Weight 3.06 CARATS

Color Grade E

Clarity Grade VS 1

ADDITIONAL GRADING INFORMATION

Polish EXCELLENT

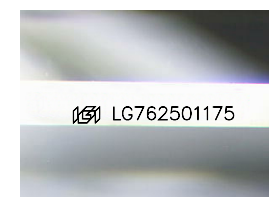
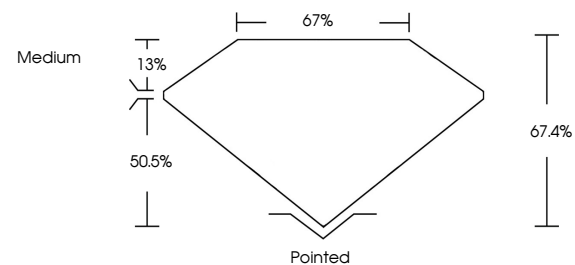
Symmetry EXCELLENT

Fluorescence NONE

Inscription(s) LG762501175

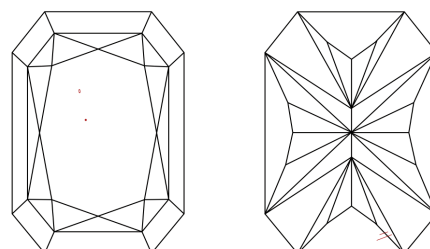
Comments: This Laboratory Grown Diamond was created by Chemical Vapor Deposition (CVD) growth process. Type IIa

PROPORTIONS



Sample Image Used

CLARITY CHARACTERISTICS



KEY TO SYMBOLS

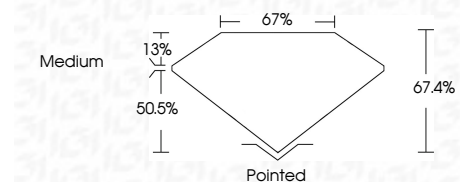
Red symbols indicate internal characteristics. Green symbols indicate external characteristics.

COLOR

D E F G H I J Faint Very Light Light

CLARITY

FL IF VS 1-2 VS 1-2 SI 1-2 I 1-3
Flawless Internally Flawless Very Very Slightly Included Very Slightly Included Slightly Included Included



ADDITIONAL GRADING INFORMATION

Polish EXCELLENT

Symmetry EXCELLENT

Fluorescence NONE

Inscription(s) LG762501175

Comments: This Laboratory Grown Diamond was created by Chemical Vapor Deposition (CVD) growth process. Type IIa



IGI



December 29, 2025
IGI Report No LG762501175
CUT CORNERED RECT. MODIFIED BRILLIANT
10.34 X 7.08 X 4.77 MM
3.06 CARATS
E
VS 1
67.4%
67%
Medium
Pointed
EXCELLENT
EXCELLENT
NONE
LG762501175
Comments: This Laboratory Grown Diamond was created by Chemical Vapor Deposition (CVD) growth process. Type IIa