



ELECTRONIC COPY

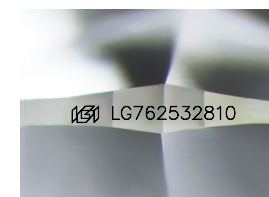
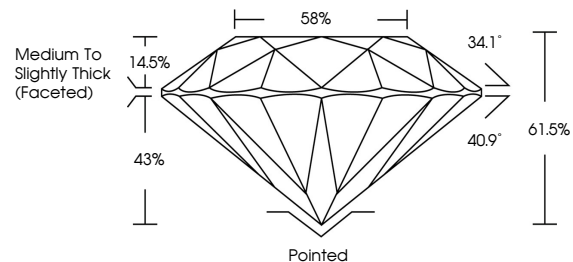
LG762532810
Report verification at igi.org



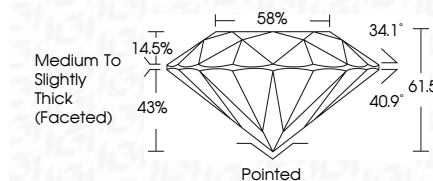
January 5, 2026
IGI Report Number LG762532810
Description LABORATORY GROWN DIAMOND
Shape and Cutting Style ROUND BRILLIANT
Measurements 7.36 - 7.39 X 4.54 MM
GRADING RESULTS
Carat Weight 1.52 CARAT
Color Grade F
Clarity Grade VVS 2
Cut Grade IDEAL

January 5, 2026
IGI Report Number LG762532810
Description LABORATORY GROWN DIAMOND
Shape and Cutting Style ROUND BRILLIANT
Measurements 7.36 - 7.39 X 4.54 MM
GRADING RESULTS
Carat Weight 1.52 CARAT
Color Grade F
Clarity Grade VVS 2
Cut Grade IDEAL

PROPORTIONS



Sample Image Used



ADDITIONAL GRADING INFORMATION

Polish EXCELLENT
Symmetry EXCELLENT
Fluorescence NONE
Inscription(s) IGI LG762532810

Comments: This Laboratory Grown Diamond was created by Chemical Vapor Deposition (CVD) growth process. Type IIa

COLOR

D E F G H I J Faint Very Light Light

CLARITY

FL IF VS 1-2 VS 1-2 SI 1-2 I 1-3
Flawless Internally Flawless Very Very Slightly Included Very Slightly Included Slightly Included Included

ADDITIONAL GRADING INFORMATION

Polish EXCELLENT
Symmetry EXCELLENT
Fluorescence NONE
Inscription(s) IGI LG762532810
Comments: This Laboratory Grown Diamond was created by Chemical Vapor Deposition (CVD) growth process. Type IIa



IGI



January 5, 2026
IGI Report No LG762532810
ROUND BRILLIANT
7.36 - 7.39 X 4.54 MM
1.52 CARAT
Color Grade F
Clarity Grade VVS 2
Cut Grade IDEAL
Depth 61.5%
Table 58%
Medium To Slightly Thick (Faceted)
Pointed
Polish EXCELLENT
Symmetry EXCELLENT
Fluorescence NONE
Inscription(s) IGI LG762532810
Comments: This Laboratory Grown Diamond was created by Chemical Vapor Deposition (CVD) growth process. Type IIa