



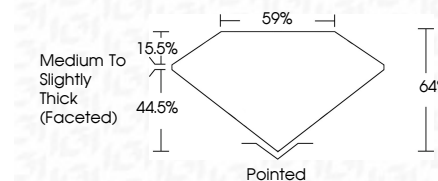
ELECTRONIC COPY

LG762540841 Report verification at igi.org



January 1, 2026 IGI Report Number LG762540841 Description LABORATORY GROWN DIAMOND Shape and Cutting Style MARQUISE BRILLIANT Measurements 13.47 X 6.50 X 4.16 MM

GRADING RESULTS Carat Weight 2.07 CARATS Color Grade E Clarity Grade VVS 2



ADDITIONAL GRADING INFORMATION Polish EXCELLENT Symmetry EXCELLENT Fluorescence NONE Inscription(s) IGI LG762540841 Comments: This Laboratory Grown Diamond was created by Chemical Vapor Deposition (CVD) growth process. Type IIa



January 1, 2026 IGI Report No LG762540841 MARQUISE BRILLIANT 13.47 X 6.50 X 4.16 MM 2.07 CARATS E VS 2 64% 59% Medium to Slightly Thick (Faceted) Pointed EXCELLENT EXCELLENT NONE NONE IGI LG762540841 Comments: This Laboratory Grown Diamond was created by Chemical Vapor Deposition (CVD) growth process. Type IIa

LABORATORY GROWN DIAMOND REPORT

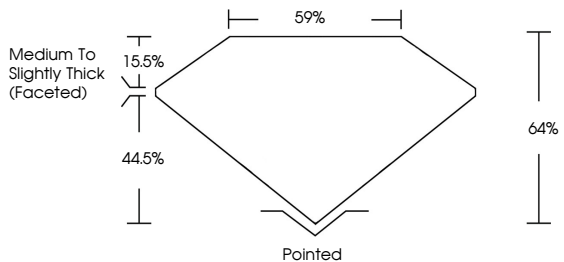
January 1, 2026 IGI Report Number LG762540841 Description LABORATORY GROWN DIAMOND Shape and Cutting Style MARQUISE BRILLIANT Measurements 13.47 X 6.50 X 4.16 MM

GRADING RESULTS Carat Weight 2.07 CARATS Color Grade E Clarity Grade VVS 2

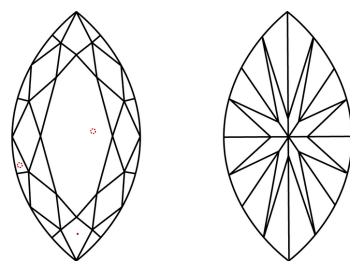
ADDITIONAL GRADING INFORMATION Polish EXCELLENT Symmetry EXCELLENT Fluorescence NONE Inscription(s) IGI LG762540841

Comments: This Laboratory Grown Diamond was created by Chemical Vapor Deposition (CVD) growth process. Type IIa

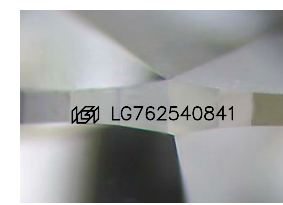
PROPORTIONS



CLARITY CHARACTERISTICS



KEY TO SYMBOLS Red symbols indicate internal characteristics. Green symbols indicate external characteristics.



Sample Image Used

Table with columns D, E, F, G, H, I, J, Faint, Very Light, Light

Table with columns FL, IF, VS 1-2, VS 1-2, SI 1-2, I 1-3 and corresponding descriptions: Flawless, Internally Flawless, Very Very Slightly Included, Very Slightly Included, Slightly Included, Included

