



**ELECTRONIC COPY**

LG762541060  
Report verification at igi.org



December 30, 2025  
IGI Report Number **LG762541060**  
Description **LABORATORY GROWN DIAMOND**  
Shape and Cutting Style **EMERALD CUT**  
Measurements **13.59 X 8.94 X 5.90 MM**  
**GRADING RESULTS**  
Carat Weight **7.69 CARATS**  
Color Grade **E**  
Clarity Grade **VVS 2**

December 30, 2025  
IGI Report Number **LG762541060**  
Description **LABORATORY GROWN DIAMOND**  
Shape and Cutting Style **EMERALD CUT**  
Measurements **13.59 X 8.94 X 5.90 MM**

**GRADING RESULTS**

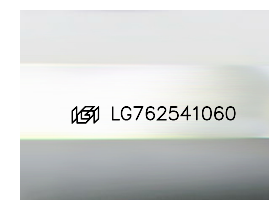
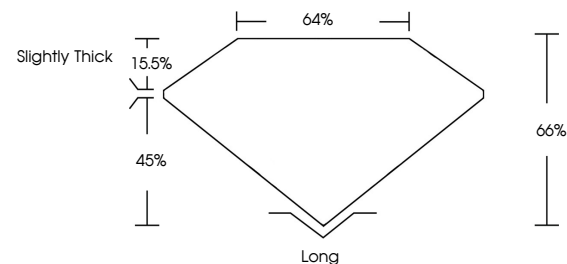
Carat Weight **7.69 CARATS**  
Color Grade **E**  
Clarity Grade **VVS 2**

**ADDITIONAL GRADING INFORMATION**

Polish **EXCELLENT**  
Symmetry **EXCELLENT**  
Fluorescence **NONE**  
Inscription(s) **IGI LG762541060**

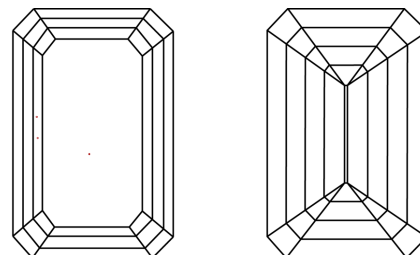
Comments: This Laboratory Grown Diamond was created by Chemical Vapor Deposition (CVD) growth process.  
Type IIa

**PROPORTIONS**



Sample Image Used

**CLARITY CHARACTERISTICS**



**KEY TO SYMBOLS**

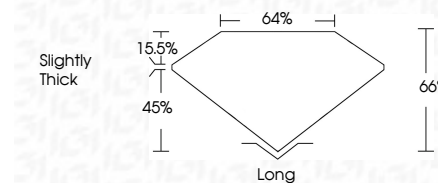
Red symbols indicate internal characteristics.  
Green symbols indicate external characteristics.

**COLOR**

D E F G H I J Faint Very Light Light

**CLARITY**

FL	IF	VVS <sup>1-2</sup>	VS <sup>1-2</sup>	SI <sup>1-2</sup>	I <sup>1-3</sup>
Flawless	Internally Flawless	Very Very Slightly Included	Very Slightly Included	Slightly Included	Included



**ADDITIONAL GRADING INFORMATION**

Polish **EXCELLENT**  
Symmetry **EXCELLENT**  
Fluorescence **NONE**  
Inscription(s) **IGI LG762541060**  
Comments: This Laboratory Grown Diamond was created by Chemical Vapor Deposition (CVD) growth process.  
Type IIa



**IGI**

December 30, 2025  
IGI Report No **LG762541060**  
**EMERALD CUT**  
13.59 X 8.94 X 5.90 MM  
7.69 CARATS  
E  
VVS 2  
66%  
64%  
Slightly Thick  
Long  
EXCELLENT  
EXCELLENT  
NONE  
IGI LG762541060  
Comments: This Laboratory Grown Diamond was created by Chemical Vapor Deposition (CVD) growth process.  
Type IIa

