



ELECTRONIC COPY

LG762541982
Report verification at igi.org



January 12, 2026
IGI Report Number **LG762541982**
Description **LABORATORY GROWN DIAMOND**
Shape and Cutting Style **SQUARE CUSHION MODIFIED BRILLIANT**

Measurements **8.57 X 8.55 X 5.94 MM**

GRADING RESULTS
Carat Weight **4.01 CARATS**
Color Grade **FANCY INTENSE YELLOW**
Clarity Grade **VS 1**

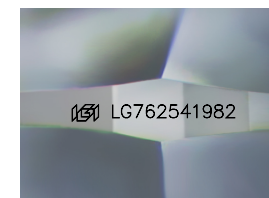
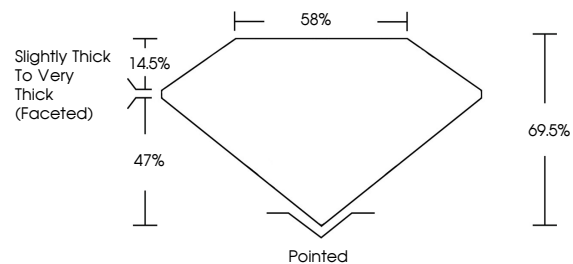
January 12, 2026
IGI Report Number **LG762541982**
Description **LABORATORY GROWN DIAMOND**
Shape and Cutting Style **SQUARE CUSHION MODIFIED BRILLIANT**
Measurements **8.57 X 8.55 X 5.94 MM**

GRADING RESULTS
Carat Weight **4.01 CARATS**
Color Grade **FANCY INTENSE YELLOW**
Clarity Grade **VS 1**

ADDITIONAL GRADING INFORMATION
Polish **EXCELLENT**
Symmetry **EXCELLENT**
Fluorescence **NONE**
Inscription(s) **IGI LG762541982**

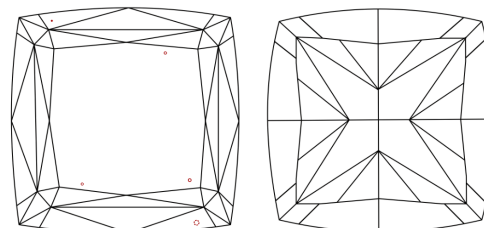
Comments: This Laboratory Grown Diamond was created by Chemical Vapor Deposition (CVD) growth process.

PROPORTIONS



Sample Image Used

CLARITY CHARACTERISTICS



KEY TO SYMBOLS

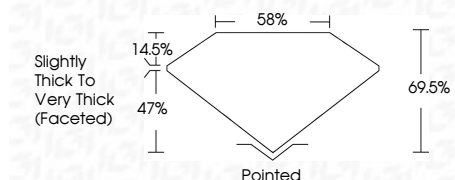
Red symbols indicate internal characteristics.
Green symbols indicate external characteristics.

COLOR

D E F G H I J Faint Very Light Light

CLARITY

FL	IF	VS ¹⁻²	VS ¹⁻²	SI ¹⁻²	I ¹⁻³
Flawless	Internally Flawless	Very Very Slightly Included	Very Slightly Included	Slightly Included	Included



ADDITIONAL GRADING INFORMATION

Polish **EXCELLENT**
Symmetry **EXCELLENT**
Fluorescence **NONE**
Inscription(s) **IGI LG762541982**
Comments: This Laboratory Grown Diamond was created by Chemical Vapor Deposition (CVD) growth process.



January 12, 2026
IGI Report No **LG762541982**
SQUARE CUSHION MODIFIED BRILLIANT
4.01 CARATS
Carat Weight **FANCY INTENSE YELLOW**
Color Grade **VS 1**
8.57 X 8.55 X 5.94 MM
Depth **69.5%**
Table **58%**
Girdle **Slightly Thick To Very Thick (Faceted)**
Culet **Pointed**
Polish **EXCELLENT**
Symmetry **EXCELLENT**
Fluorescence **NONE**
Inscription(s) **IGI LG762541982**
Comments: This Laboratory Grown Diamond was created by Chemical Vapor Deposition (CVD) growth process.