



**INTERNATIONAL  
GEMOLOGICAL  
INSTITUTE**

**ELECTRONIC COPY**

**LABORATORY GROWN DIAMOND REPORT**

January 12, 2026  
 IGI Report Number **LG762550476**  
 Description **LABORATORY GROWN DIAMOND**  
 Shape and Cutting Style **ROUND BRILLIANT**  
 Measurements **4.97 - 5.02 X 3.01 MM**

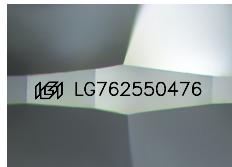
**GRADING RESULTS**

Carat Weight **0.47 CARAT**  
 Color Grade **FANCY VIVID BLUE**  
 Clarity Grade **VS 2**  
 Cut Grade **VERY GOOD**

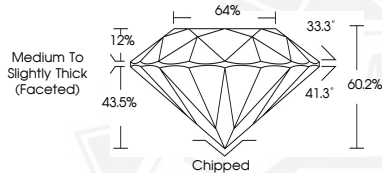
**ADDITIONAL GRADING INFORMATION**

Polish **GOOD**  
 Symmetry **VERY GOOD**  
 Fluorescence **NONE**  
 Inscription(s) **IGI LG762550476**

Comments: This Laboratory Grown Diamond was created by High Pressure High Temperature (HPHT) growth process. Indications of post-growth treatment.



Sample Image Used



January 12, 2026  
 IGI Report Number **LG762550476**  
 ROUND BRILLIANT  
 LABORATORY GROWN DIAMOND  
 4.97 - 5.02 X 3.01 MM  
 Carat Weight **0.47 CARAT**  
 Color Grade **FANCY VIVID BLUE**  
 Clarity Grade **VS 2**  
 Cut Grade **VERY GOOD**  
 Polish **GOOD**  
 Symmetry **VERY GOOD**  
 Fluorescence **NONE**  
 Inscription(s) **IGI LG762550476**

Comments: This Laboratory Grown Diamond was created by High Pressure High Temperature (HPHT) growth process. Indications of post-growth treatment.



January 12, 2026  
 IGI Report Number **LG762550476**  
 ROUND BRILLIANT  
 LABORATORY GROWN DIAMOND  
 4.97 - 5.02 X 3.01 MM  
 Carat Weight **0.47 CARAT**  
 Color Grade **FANCY VIVID BLUE**  
 Clarity Grade **VS 2**  
 Cut Grade **VERY GOOD**  
 Polish **GOOD**  
 Symmetry **VERY GOOD**  
 Fluorescence **NONE**  
 Inscription(s) **IGI LG762550476**

Comments: This Laboratory Grown Diamond was created by High Pressure High Temperature (HPHT) growth process. Indications of post-growth treatment.

THIS DOCUMENT WAS PRODUCED WITH THE FOLLOWING SECURITY MEASURES: SPECIAL DOCUMENT PAPER, INK SCREENS, WATERMARK, BACKGROUND DESIGNS, HOLOGRAM AND OTHER SECURITY FEATURES NOT LISTED AND DO EXCEED DOCUMENT SECURITY INDUSTRY GUIDELINES.

For terms & conditions and to verify this report, please visit [www.igi.org](http://www.igi.org)