



ELECTRONIC COPY

LG762552802
Report verification at igi.org



January 15, 2026

IGI Report Number **LG762552802**

Description **LABORATORY GROWN DIAMOND**

Shape and Cutting Style **PRINCESS CUT**

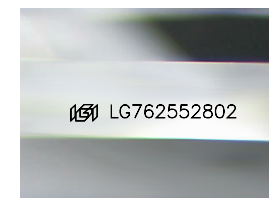
Measurements **9.38 X 9.25 X 6.46 MM**

GRADING RESULTS

Carat Weight **5.03 CARATS**

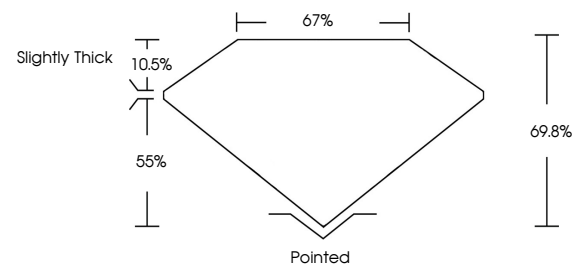
Color Grade **D**

Clarity Grade **VVS 1**

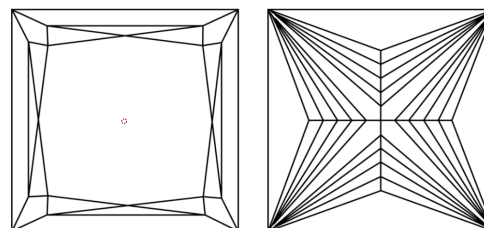


Sample Image Used

PROPORTIONS



CLARITY CHARACTERISTICS



KEY TO SYMBOLS

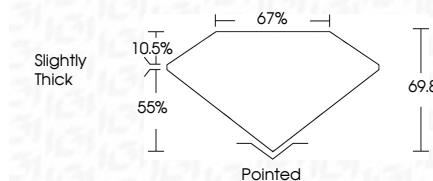
Red symbols indicate internal characteristics.
Green symbols indicate external characteristics.

COLOR

D E F G H I J Faint Very Light Light

CLARITY

FL	IF	VVS ¹⁻²	VS ¹⁻²	SI ¹⁻²	I ¹⁻³
Flawless	Internally Flawless	Very Very Slightly Included	Very Slightly Included	Slightly Included	Included



ADDITIONAL GRADING INFORMATION

Polish **EXCELLENT**

Symmetry **EXCELLENT**

Fluorescence **NONE**

Inscription(s) **IGI LG762552802**

Comments: As Grown - No indication of post-growth treatment.

This Laboratory Grown Diamond was created by High Pressure High Temperature (HPHT) growth process. Type II



IGI



January 15, 2026
IGI Report No LG762552802
PRINCESS CUT

5.03 CARATS
D

9.38 X 9.25 X 6.46 MM
Color Grade
Clarity Grade
Table
Depth
Girdle
Slightly Thick

Pointed
EXCELLENT
EXCELLENT
NONE
IGI LG762552802

Comments: As Grown - No indication of post-growth treatment. This Laboratory Grown Diamond was created by High Pressure High Temperature (HPHT) growth process. Type II