



ELECTRONIC COPY

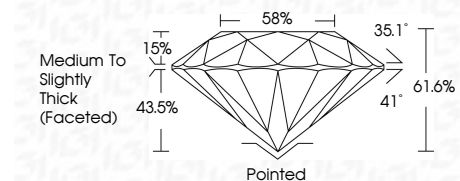
LG762567434 Report verification at igi.org



January 27, 2026 IGI Report Number LG762567434 Description LABORATORY GROWN DIAMOND Shape and Cutting Style ROUND BRILLIANT Measurements 8.16 - 8.19 X 5.03 MM

GRADING RESULTS

Carat Weight 2.05 CARATS Color Grade E Clarity Grade VVS 2 Cut Grade IDEAL



ADDITIONAL GRADING INFORMATION

Polish EXCELLENT Symmetry EXCELLENT Fluorescence NONE Inscription(s) LG762567434 Comments: As Grown - No indication of post-growth treatment. This Laboratory Grown Diamond was created by High Pressure High Temperature (HPHT) growth process. Type II



January 27, 2026 IGI Report No LG762567434 ROUND BRILLIANT 2.05 CARATS E 8.16 - 8.19 X 5.03 MM Color Grade E Clarity Grade VVS 2 Cut Grade IDEAL Depth 61.6% Table 58% Medium To Slightly Thick (Faceted) Gulet Pointed EXCELLENT Symmetry EXCELLENT Fluorescence NONE Inscription(s) LG762567434 Comments: As Grown - No indication of post-growth treatment. This Laboratory Grown Diamond was created by High Pressure High Temperature (HPHT) growth process. Type II

January 27, 2026 IGI Report Number LG762567434 Description LABORATORY GROWN DIAMOND Shape and Cutting Style ROUND BRILLIANT Measurements 8.16 - 8.19 X 5.03 MM

GRADING RESULTS

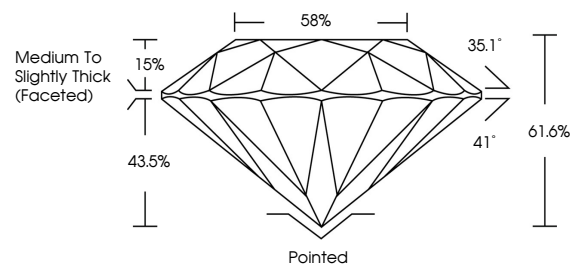
Carat Weight 2.05 CARATS Color Grade E Clarity Grade VVS 2 Cut Grade IDEAL

ADDITIONAL GRADING INFORMATION

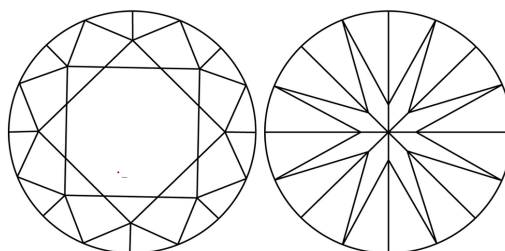
Polish EXCELLENT Symmetry EXCELLENT Fluorescence NONE Inscription(s) LG762567434

Comments: As Grown - No indication of post-growth treatment. This Laboratory Grown Diamond was created by High Pressure High Temperature (HPHT) growth process. Type II

PROPORTIONS

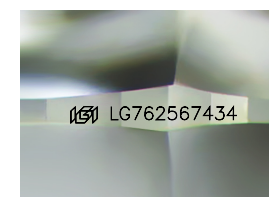


CLARITY CHARACTERISTICS



KEY TO SYMBOLS

Red symbols indicate internal characteristics. Green symbols indicate external characteristics.



Sample Image Used

COLOR

D E F G H I J Faint Very Light Light

CLARITY

FL IF VVS 1-2 VS 1-2 SI 1-2 I 1-3 Flawless Internally Flawless Very Very Slightly Included Very Slightly Included Slightly Included Included

