



ELECTRONIC COPY

LG762573086
Report verification at igi.org



January 16, 2026

IGI Report Number **LG762573086**

Description **LABORATORY GROWN DIAMOND**

Shape and Cutting Style **ROUND BRILLIANT**

Measurements **7.48 - 7.51 X 4.46 MM**

GRADING RESULTS

Carat Weight **1.54 CARAT**

Color Grade **D**

Clarity Grade **VVS 2**

Cut Grade **IDEAL**

January 16, 2026
IGI Report Number **LG762573086**
Description **LABORATORY GROWN DIAMOND**
Shape and Cutting Style **ROUND BRILLIANT**
Measurements **7.48 - 7.51 X 4.46 MM**

GRADING RESULTS

Carat Weight **1.54 CARAT**

Color Grade **D**

Clarity Grade **VVS 2**

Cut Grade **IDEAL**

ADDITIONAL GRADING INFORMATION

Polish **EXCELLENT**

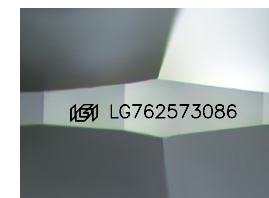
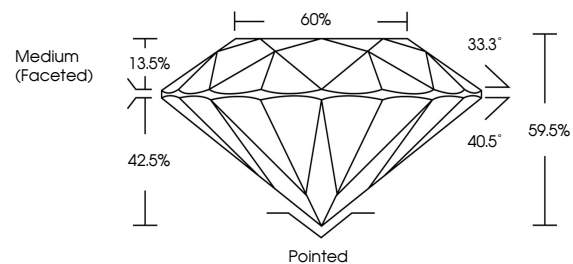
Symmetry **EXCELLENT**

Fluorescence **NONE**

Inscription(s) **IGI LG762573086**

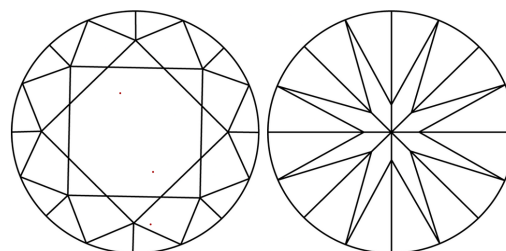
Comments: This Laboratory Grown Diamond was created by Chemical Vapor Deposition (CVD) growth process.
Type IIa

PROPORTIONS



Sample Image Used

CLARITY CHARACTERISTICS



KEY TO SYMBOLS

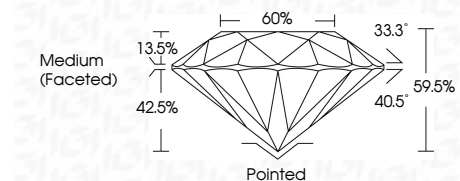
Red symbols indicate internal characteristics.
Green symbols indicate external characteristics.

COLOR

D E F G H I J Faint Very Light Light

CLARITY

FL	IF	VVS ¹⁻²	VS ¹⁻²	SI ¹⁻²	I ¹⁻³
Flawless	Internally Flawless	Very Very Slightly Included	Very Slightly Included	Slightly Included	Included



ADDITIONAL GRADING INFORMATION

Polish **EXCELLENT**

Symmetry **EXCELLENT**

Fluorescence **NONE**

Inscription(s) **IGI LG762573086**

Comments: This Laboratory Grown Diamond was created by Chemical Vapor Deposition (CVD) growth process.
Type IIa



IGI



January 16, 2026	1.54 CARAT	D	Pointed
IGI Report No LG762573086	7.48 - 7.51 X 4.46 MM	VVS 2	EXCELLENT
ROUND BRILLIANT	Color Grade	IDEAL	EXCELLENT
	Clarity Grade	59.5%	NONE
	Depth	60%	IGI LG762573086
	Table	Medium (Faceted)	
	Girdle		
	Culet		
	Polish		
	Symmetry		
	Fluorescence		
	Inscription(s)		

Comments: This Laboratory Grown Diamond was created by Chemical Vapor Deposition (CVD) growth process.
Type IIa