



**ELECTRONIC COPY**

LG762579626  
Report verification at igi.org



January 15, 2026

IGI Report Number **LG762579626**

Description **LABORATORY GROWN DIAMOND**

Shape and Cutting Style **HEART BRILLIANT**

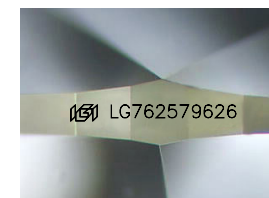
Measurements **8.09 X 8.65 X 5.23 MM**

**GRADING RESULTS**

Carat Weight **2.21 CARATS**

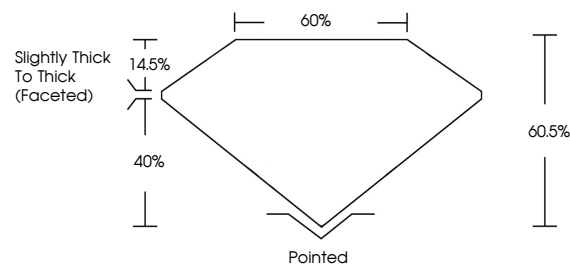
Color Grade **D**

Clarity Grade **VVS 1**

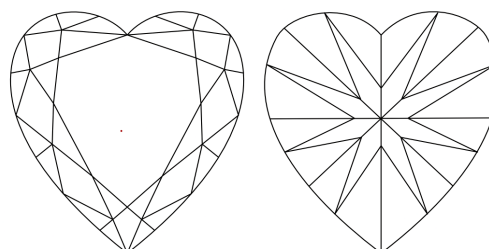


Sample Image Used

**PROPORTIONS**



**CLARITY CHARACTERISTICS**



**KEY TO SYMBOLS**

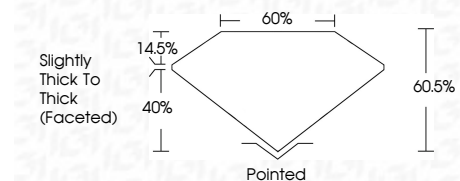
Red symbols indicate internal characteristics.  
Green symbols indicate external characteristics.

**COLOR**

D E F G H I J Faint Very Light Light

**CLARITY**

FL	IF	VS <sup>1-2</sup>	VS <sup>1-2</sup>	SI <sup>1-2</sup>	I <sup>1-3</sup>
Flawless	Internally Flawless	Very Very Slightly Included	Very Slightly Included	Slightly Included	Included



**ADDITIONAL GRADING INFORMATION**

Polish **EXCELLENT**

Symmetry **EXCELLENT**

Fluorescence **NONE**

Inscription(s) **IGI LG762579626**

Comments: This Laboratory Grown Diamond was created by Chemical Vapor Deposition (CVD) growth process. Type IIa



January 15, 2026  
IGI Report No LG762579626  
**HEART BRILLIANT**

**8.09 X 8.65 X 5.23 MM**

Carat Weight **2.21 CARATS**

Color Grade **D**

Clarity Grade **VVS 1**

Table **60.5%**

Depth **40%**

Girdle **Slightly Thick To Thick (Faceted)**

Culet **Pointed**

Polish **EXCELLENT**

Symmetry **EXCELLENT**

Fluorescence **NONE**

Inscription(s) **IGI LG762579626**

Comments: This Laboratory Grown Diamond was created by Chemical Vapor Deposition (CVD) growth process. Type IIa