



ELECTRONIC COPY

LG763618930
Report verification at igi.org



January 23, 2026

IGI Report Number LG763618930

Description LABORATORY GROWN DIAMOND

Shape and Cutting Style EMERALD CUT

Measurements 9.91 X 6.90 X 4.67 MM

GRADING RESULTS

Carat Weight 3.10 CARATS

Color Grade FANCY INTENSE PINK

Clarity Grade VS 1

January 23, 2026
IGI Report Number LG763618930
Description LABORATORY GROWN DIAMOND
Shape and Cutting Style EMERALD CUT
Measurements 9.91 X 6.90 X 4.67 MM

GRADING RESULTS

Carat Weight 3.10 CARATS

Color Grade FANCY INTENSE PINK

Clarity Grade VS 1

ADDITIONAL GRADING INFORMATION

Polish EXCELLENT

Symmetry EXCELLENT

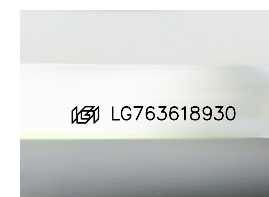
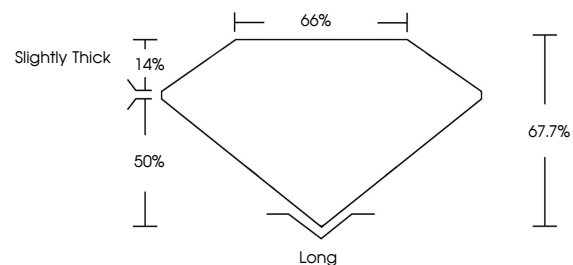
Fluorescence SLIGHT

Inscription(s) LG763618930

Comments: This Laboratory Grown Diamond was created by Chemical Vapor Deposition (CVD) growth process. Indications of post-growth treatment.

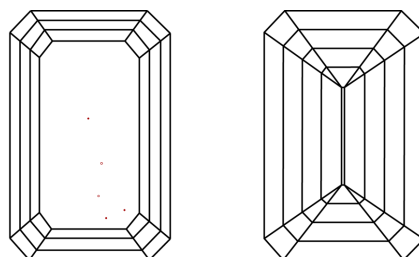
Secondary color: Orange

PROPORTIONS



Sample Image Used

CLARITY CHARACTERISTICS



KEY TO SYMBOLS

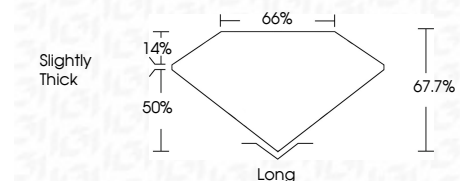
Red symbols indicate internal characteristics. Green symbols indicate external characteristics.

COLOR

D E F G H I J Faint Very Light Light

CLARITY

FL IF VS 1-2 VS 2-3 SI 1-2 I 1-3
Flawless Internally Flawless Very Very Slightly Included Very Slightly Included Slightly Included Included



ADDITIONAL GRADING INFORMATION

Polish EXCELLENT

Symmetry EXCELLENT

Fluorescence SLIGHT

Inscription(s) LG763618930

Comments: This Laboratory Grown Diamond was created by Chemical Vapor Deposition (CVD) growth process. Indications of post-growth treatment.

Secondary color: Orange



January 23, 2026
IGI Report No. LG763618930
EMERALD CUT
3.10 CARATS
FANCY INTENSE PINK
VS 1
67.7%
50%
Slightly Thick
Long
EXCELLENT
EXCELLENT
SLIGHT
IGI LG763618930
Comments: This Laboratory Grown Diamond was created by Chemical Vapor Deposition (CVD) growth process. Indications of post-growth treatment. Secondary color: Orange