



**ELECTRONIC COPY**

**LABORATORY GROWN DIAMOND REPORT**

January 12, 2026  
IGI Report Number **LG763631754**

Description **LABORATORY GROWN DIAMOND**

Shape and Cutting Style **CUT CORNERED RECTANGULAR  
MODIFIED BRILLIANT**

Measurements **10.42 X 7.31 X 4.94 MM**

**GRADING RESULTS**

Carat Weight **3.56 CARATS**

Color Grade **FANCY VIVID YELLOW**

Clarity Grade **VVS 2**

**ADDITIONAL GRADING INFORMATION**

Polish **EXCELLENT**

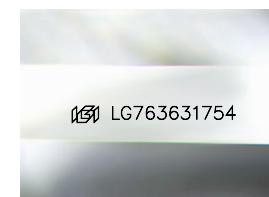
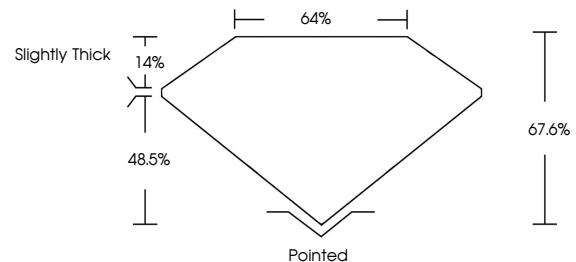
Symmetry **EXCELLENT**

Fluorescence **NONE**

Inscription(s) **IGI LG763631754**

Comments: This Laboratory Grown Diamond was created by Chemical Vapor Deposition (CVD) growth process.

**PROPORTIONS**



Sample Image Used

**COLOR**

D E F G H I J Faint Very Light Light

**CLARITY**

FL	IF	VVS <sup>1-2</sup>	VS <sup>1-2</sup>	SI <sup>1-2</sup>	I <sup>1-3</sup>
Flawless	Internally Flawless	Very Very Slightly Included	Very Slightly Included	Slightly Included	Included



January 12, 2026

IGI Report Number **LG763631754**

Description **LABORATORY GROWN DIAMOND**

Shape and Cutting Style **CUT CORNERED  
RECTANGULAR MODIFIED  
BRILLIANT**

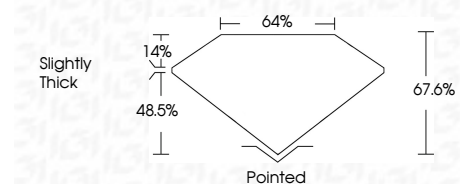
Measurements **10.42 X 7.31 X 4.94 MM**

**GRADING RESULTS**

Carat Weight **3.56 CARATS**

Color Grade **FANCY VIVID YELLOW**

Clarity Grade **VVS 2**



**ADDITIONAL GRADING INFORMATION**

Polish **EXCELLENT**

Symmetry **EXCELLENT**

Fluorescence **NONE**

Inscription(s) **IGI LG763631754**

Comments: This Laboratory Grown Diamond was created by Chemical Vapor Deposition (CVD) growth process.



**IGI**



January 12, 2026  
IGI Report No LG763631754  
CUT CORNERED RECT. MODIFIED BRILLIANT  
10.42 X 7.31 X 4.94 MM  
3.56 CARATS  
FANCY VIVID YELLOW  
VVS 2  
67.6%  
64%  
Slightly Thick  
Pointed  
EXCELLENT  
EXCELLENT  
NONE  
IGI LG763631754  
Comments: This Laboratory Grown Diamond was created by Chemical Vapor Deposition (CVD) growth process.