



**ELECTRONIC COPY**

LG763632955  
Report verification at igi.org



January 19, 2026  
IGI Report Number **LG763632955**  
Description **LABORATORY GROWN DIAMOND**  
Shape and Cutting Style **CUSHION MODIFIED BRILLIANT**  
Measurements **7.46 X 6.61 X 4.46 MM**  
**GRADING RESULTS**  
Carat Weight **2.05 CARATS**  
Color Grade **FANCY INTENSE YELLOW**  
Clarity Grade **VS 2**

January 19, 2026  
IGI Report Number **LG763632955**  
Description **LABORATORY GROWN DIAMOND**  
Shape and Cutting Style **CUSHION MODIFIED BRILLIANT**  
Measurements **7.46 X 6.61 X 4.46 MM**

**GRADING RESULTS**

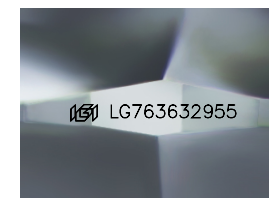
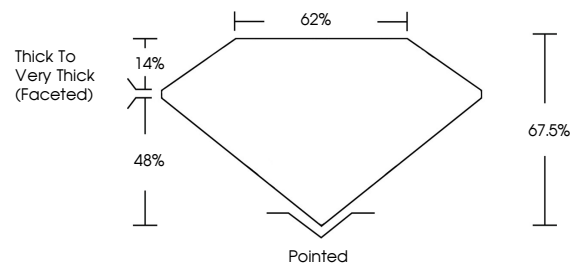
Carat Weight **2.05 CARATS**  
Color Grade **FANCY INTENSE YELLOW**  
Clarity Grade **VS 2**

**ADDITIONAL GRADING INFORMATION**

Polish **EXCELLENT**  
Symmetry **EXCELLENT**  
Fluorescence **NONE**  
Inscription(s) **IGI LG763632955**

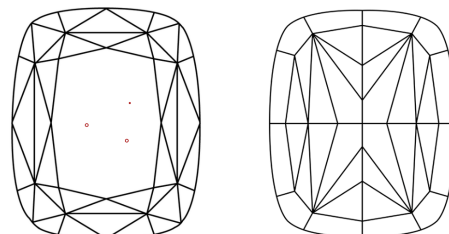
Comments: This Laboratory Grown Diamond was created by Chemical Vapor Deposition (CVD) growth process.

**PROPORTIONS**



Sample Image Used

**CLARITY CHARACTERISTICS**



**KEY TO SYMBOLS**

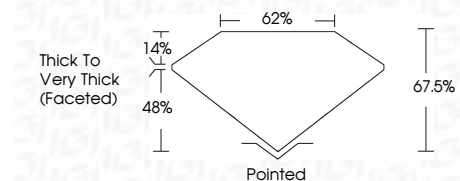
Red symbols indicate internal characteristics.  
Green symbols indicate external characteristics.

**COLOR**

D E F G H I J Faint Very Light Light

**CLARITY**

FL	IF	VS <sup>1-2</sup>	VS <sup>1-2</sup>	SI <sup>1-2</sup>	I <sup>1-3</sup>
Flawless	Internally Flawless	Very Very Slightly Included	Very Slightly Included	Slightly Included	Included



**ADDITIONAL GRADING INFORMATION**

Polish **EXCELLENT**  
Symmetry **EXCELLENT**  
Fluorescence **NONE**  
Inscription(s) **IGI LG763632955**  
Comments: This Laboratory Grown Diamond was created by Chemical Vapor Deposition (CVD) growth process.



January 19, 2026  
IGI Report No LG763632955  
CUSHION MODIFIED BRILLIANT  
2.05 CARATS  
7.46 X 6.61 X 4.46 MM  
FANCY INTENSE YELLOW  
VS 2  
2.05 CARATS  
FANCY INTENSE YELLOW  
VS 2  
7.46 X 6.61 X 4.46 MM  
EXCELLENT  
EXCELLENT  
NONE  
IGI LG763632955  
Pointed  
EXCELLENT  
EXCELLENT  
NONE  
IGI LG763632955  
Comments: This Laboratory Grown Diamond was created by Chemical Vapor Deposition (CVD) growth process.