



January 15, 2026

IGI Report Number **LG763634437**

**PRINCESS CUT
LABORATORY GROWN DIAMOND**

4.35 X 4.31 X 3.17 MM

Carat Weight	0.51 CARAT
Color Grade	E
Clarity Grade	VS 1
Polish	VERY GOOD
Symmetry	GOOD
Fluorescence	NONE
Inscription(s)	IGI LG763634437

Comments: This Laboratory Grown Diamond was created by Chemical Vapor Deposition (CVD) growth process. Type IIa

LABORATORY GROWN DIAMOND REPORT

January 15, 2026

IGI Report Number

LG763634437

Description

LABORATORY GROWN DIAMOND

Shape and Cutting Style

PRINCESS CUT

Measurements

4.35 X 4.31 X 3.17 MM

GRADING RESULTS

Carat Weight

0.51 CARAT

Color Grade

E

Clarity Grade

VS 1

ADDITIONAL GRADING INFORMATION

Polish

VERY GOOD

Symmetry

GOOD

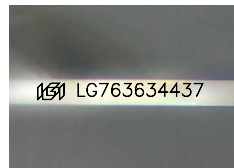
Fluorescence

NONE

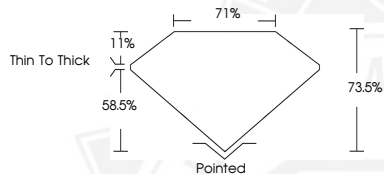
Inscription(s)

IGI LG763634437

Comments: This Laboratory Grown Diamond was created by Chemical Vapor Deposition (CVD) growth process. Type IIa



Sample Image Used



January 15, 2026

IGI Report Number **LG763634437**

**PRINCESS CUT
LABORATORY GROWN DIAMOND**

4.35 X 4.31 X 3.17 MM

Carat Weight	0.51 CARAT
Color Grade	E
Clarity Grade	VS 1
Polish	VERY GOOD
Symmetry	GOOD
Fluorescence	NONE
Inscription(s)	IGI LG763634437

Comments: This Laboratory Grown Diamond was created by Chemical Vapor Deposition (CVD) growth process. Type IIa



THIS DOCUMENT WAS PRODUCED WITH THE FOLLOWING SECURITY MEASURES: SPECIAL DOCUMENT PAPER, INK SCREENS, WATERMARK, BACKGROUND DESIGNS, HOLOGRAM AND OTHER SECURITY FEATURES NOT LISTED AND DO EXCEED DOCUMENT SECURITY INDUSTRY GUIDELINES.