



January 22, 2026

IGI Report Number **LG763634808**

**ROUND BRILLIANT
LABORATORY GROWN DIAMOND
4.73 - 4.75 X 2.94 MM**

**0.41 CARAT
D
VS 1
IDEAL
EXCELLENT
EXCELLENT
NONE
NONE**
Inscription(s) **IGI LG763634808**

Comments: As Grown - No indication of post-growth treatment. This Laboratory Grown Diamond was created by High Pressure High Temperature (HPHT) growth process. Type II

LABORATORY GROWN DIAMOND REPORT

January 22, 2026
IGI Report Number **LG763634808**
Description **LABORATORY GROWN DIAMOND**
Shape and Cutting Style **ROUND BRILLIANT**
Measurements **4.73 - 4.75 X 2.94 MM**

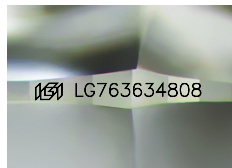
GRADING RESULTS

Carat Weight **0.41 CARAT**
Color Grade **D**
Clarity Grade **VS 1**
Cut Grade **IDEAL**

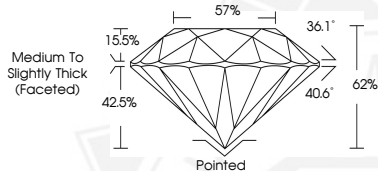
ADDITIONAL GRADING INFORMATION

Polish **EXCELLENT**
Symmetry **EXCELLENT**
Fluorescence **NONE**
Inscription(s) **IGI LG763634808**

Comments: As Grown - No indication of post-growth treatment. This Laboratory Grown Diamond was created by High Pressure High Temperature (HPHT) growth process. Type II



Sample Image Used



January 22, 2026

IGI Report Number **LG763634808**

**ROUND BRILLIANT
LABORATORY GROWN DIAMOND
4.73 - 4.75 X 2.94 MM**

**0.41 CARAT
D
VS 1
IDEAL
EXCELLENT
EXCELLENT
NONE
NONE**
Inscription(s) **IGI LG763634808**

Comments: As Grown - No indication of post-growth treatment. This Laboratory Grown Diamond was created by High Pressure High Temperature (HPHT) growth process. Type II

THIS DOCUMENT WAS PRODUCED WITH THE FOLLOWING SECURITY MEASURES: SPECIAL DOCUMENT PAPER, INK SCREENS, WATERMARK, BACKGROUND DESIGNS, HOLOGRAM AND OTHER SECURITY FEATURES NOT LISTED AND DO EXCEED DOCUMENT SECURITY INDUSTRY GUIDELINES.