



ELECTRONIC COPY

LG763648575
Report verification at igi.org



January 23, 2026
IGI Report Number LG763648575
Description LABORATORY GROWN DIAMOND
Shape and Cutting Style CUT CORNERED RECTANGULAR MODIFIED BRILLIANT
Measurements 8.10 X 5.72 X 3.79 MM
GRADING RESULTS
Carat Weight 1.51 CARAT
Color Grade FANCY VIVID PINK
Clarity Grade VS 1

LABORATORY GROWN DIAMOND REPORT

January 23, 2026
IGI Report Number LG763648575
Description LABORATORY GROWN DIAMOND
Shape and Cutting Style CUT CORNERED RECTANGULAR MODIFIED BRILLIANT
Measurements 8.10 X 5.72 X 3.79 MM

GRADING RESULTS

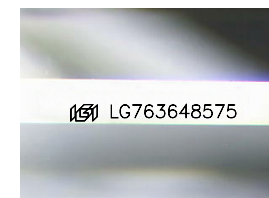
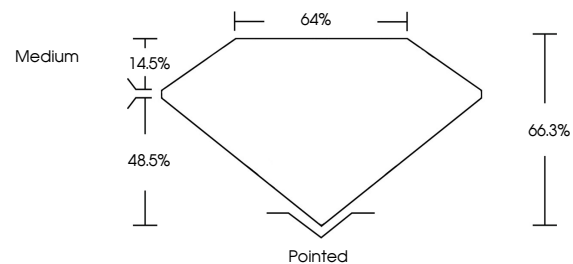
Carat Weight 1.51 CARAT
Color Grade FANCY VIVID PINK
Clarity Grade VS 1

ADDITIONAL GRADING INFORMATION

Polish EXCELLENT
Symmetry EXCELLENT
Fluorescence SLIGHT
Inscription(s) LG763648575

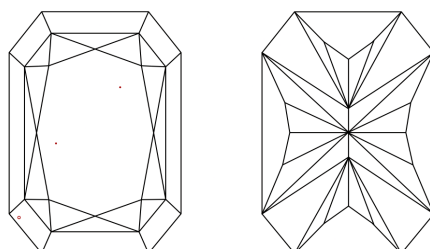
Comments: This Laboratory Grown Diamond was created by Chemical Vapor Deposition (CVD) growth process.
Indications of post-growth treatment.

PROPORTIONS



Sample Image Used

CLARITY CHARACTERISTICS



KEY TO SYMBOLS

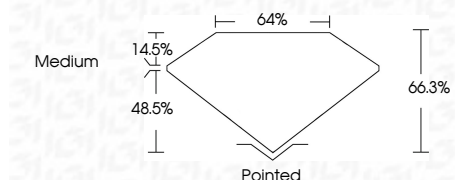
Red symbols indicate internal characteristics.
Green symbols indicate external characteristics.

COLOR

D E F G H I J Faint Very Light Light

CLARITY

FL IF VS 1-2 VS 1-2 SI 1-2 I 1-3
Flawless Internally Flawless Very Very Slightly Included Very Slightly Included Slightly Included Included



ADDITIONAL GRADING INFORMATION

Polish EXCELLENT
Symmetry EXCELLENT
Fluorescence SLIGHT
Inscription(s) LG763648575
Comments: This Laboratory Grown Diamond was created by Chemical Vapor Deposition (CVD) growth process.
Indications of post-growth treatment.



January 23, 2026
IGI Report No LG763648575
CUT CORNERED RECT. MODIFIED BRILLIANT
8.10 X 5.72 X 3.79 MM
1.51 CARAT
FANCY VIVID PINK
VS 1
66.3%
64%
Medium
Pointed
EXCELLENT
EXCELLENT
SLIGHT
LG763648575
Comments: This Laboratory Grown Diamond was created by Chemical Vapor Deposition (CVD) growth process.
Indications of post-growth treatment.