



ELECTRONIC COPY

LG763648671
Report verification at igi.org



January 24, 2026

IGI Report Number **LG763648671**

Description **LABORATORY GROWN DIAMOND**

Shape and Cutting Style **ROUND BRILLIANT**

Measurements **7.99 - 8.04 X 4.79 MM**

GRADING RESULTS

Carat Weight **1.88 CARAT**

Color Grade **FANCY INTENSE PINK**

Clarity Grade **VVS 2**

Cut Grade **IDEAL**

January 24, 2026

IGI Report Number **LG763648671**

Description **LABORATORY GROWN DIAMOND**

Shape and Cutting Style **ROUND BRILLIANT**

Measurements **7.99 - 8.04 X 4.79 MM**

GRADING RESULTS

Carat Weight **1.88 CARAT**

Color Grade **FANCY INTENSE PINK**

Clarity Grade **VVS 2**

Cut Grade **IDEAL**

ADDITIONAL GRADING INFORMATION

Polish **EXCELLENT**

Symmetry **EXCELLENT**

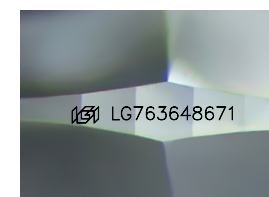
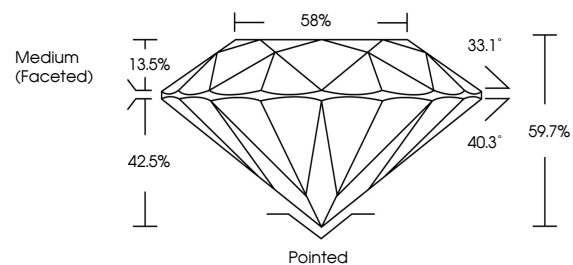
Fluorescence **SLIGHT**

Inscription(s) **LG763648671**

Comments: This Laboratory Grown Diamond was created by Chemical Vapor Deposition (CVD) growth process.

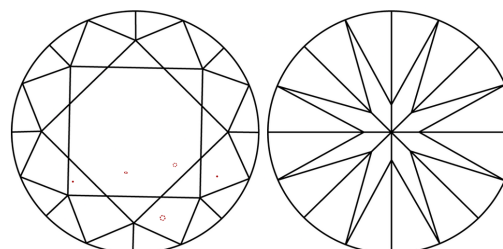
Indications of post-growth treatment.

PROPORTIONS



Sample Image Used

CLARITY CHARACTERISTICS



KEY TO SYMBOLS

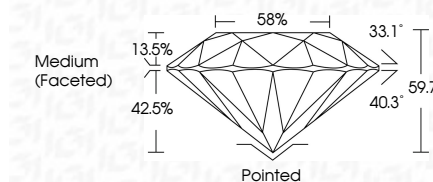
Red symbols indicate internal characteristics.
Green symbols indicate external characteristics.

COLOR

D E F G H I J Faint Very Light Light

CLARITY

FL	IF	VVS ¹⁻²	VS ¹⁻²	SI ¹⁻²	I ¹⁻³
Flawless	Internally Flawless	Very Very Slightly Included	Very Slightly Included	Slightly Included	Included



ADDITIONAL GRADING INFORMATION

Polish **EXCELLENT**

Symmetry **EXCELLENT**

Fluorescence **SLIGHT**

Inscription(s) **LG763648671**

Comments: This Laboratory Grown Diamond was created by Chemical Vapor Deposition (CVD) growth process. Indications of post-growth treatment.



January 24, 2026	1.88 CARAT	Pointed
IGI Report No LG763648671	FANCY INTENSE PINK	EXCELLENT
ROUND BRILLIANT	VVS 2	EXCELLENT
7.99 - 8.04 X 4.79 MM	IDEAL	EXCELLENT
Carat Weight	59.7%	SLIGHT
Color Grade	88%	SLIGHT
Clarity Grade	Medium (Faceted)	SLIGHT
Depth		SLIGHT
Table		SLIGHT
Girdle		SLIGHT
Polish		SLIGHT
Symmetry		SLIGHT
Fluorescence		SLIGHT
Inscription(s)		SLIGHT
Comments: This Laboratory Grown Diamond was created by Chemical Vapor Deposition (CVD) growth process. Indications of post-growth treatment.		SLIGHT