



**ELECTRONIC COPY**

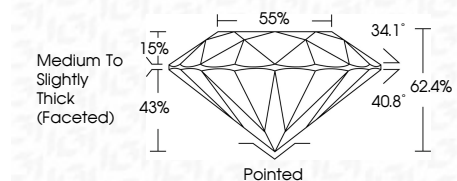
LG763649096  
Report verification at igi.org



February 5, 2026  
IGI Report Number **LG763649096**  
Description **LABORATORY GROWN DIAMOND**  
Shape and Cutting Style **ROUND BRILLIANT**  
Measurements **9.15 - 9.22 X 5.73 MM**

**GRADING RESULTS**

Carat Weight **3.00 CARATS**  
Color Grade **E**  
Clarity Grade **VVS 2**  
Cut Grade **IDEAL**



**ADDITIONAL GRADING INFORMATION**

Polish **EXCELLENT**  
Symmetry **EXCELLENT**  
Fluorescence **NONE**  
Inscription(s) **IGI LG763649096**  
Comments: This Laboratory Grown Diamond was created by Chemical Vapor Deposition (CVD) growth process. Type IIa



|                           |                           |                       |             |               |           |       |                                    |         |           |           |              |                 |
|---------------------------|---------------------------|-----------------------|-------------|---------------|-----------|-------|------------------------------------|---------|-----------|-----------|--------------|-----------------|
| February 5, 2026          | IGI Report No LG763649096 | 3.00 CARATS           | E           | VVS 2         | IDEAL     | 62.4% | Medium To Slightly Thick (Faceted) | Pointed | EXCELLENT | EXCELLENT | NONE         | IGI LG763649096 |
| IGI Report No LG763649096 | ROUND BRILLIANT           | 9.15 - 9.22 X 5.73 MM | Color Grade | Clarity Grade | Cut Grade | Depth | Table                              | Grade   | Polish    | Symmetry  | Fluorescence | Inscription(s)  |

Comments: This Laboratory Grown Diamond was created by Chemical Vapor Deposition (CVD) growth process. Type IIa

February 5, 2026  
IGI Report Number **LG763649096**  
Description **LABORATORY GROWN DIAMOND**  
Shape and Cutting Style **ROUND BRILLIANT**  
Measurements **9.15 - 9.22 X 5.73 MM**

**GRADING RESULTS**

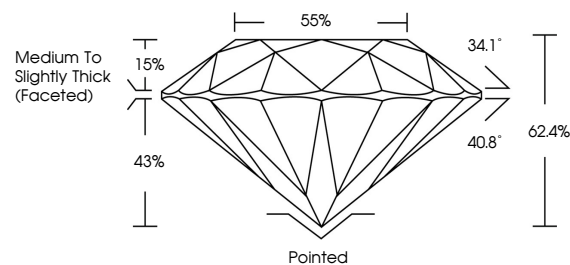
Carat Weight **3.00 CARATS**  
Color Grade **E**  
Clarity Grade **VVS 2**  
Cut Grade **IDEAL**

**ADDITIONAL GRADING INFORMATION**

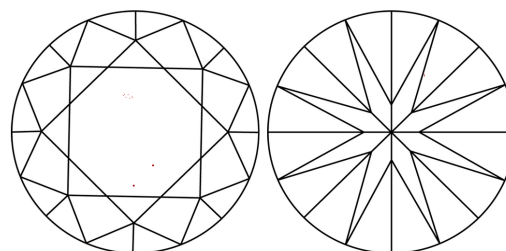
Polish **EXCELLENT**  
Symmetry **EXCELLENT**  
Fluorescence **NONE**  
Inscription(s) **IGI LG763649096**

Comments: This Laboratory Grown Diamond was created by Chemical Vapor Deposition (CVD) growth process. Type IIa

**PROPORTIONS**

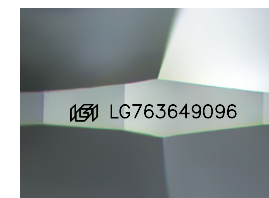


**CLARITY CHARACTERISTICS**



**KEY TO SYMBOLS**

Red symbols indicate internal characteristics.  
Green symbols indicate external characteristics.



Sample Image Used

**COLOR**

D E F G H I J Faint Very Light Light

**CLARITY**

|          |                     |                             |                        |                   |                  |
|----------|---------------------|-----------------------------|------------------------|-------------------|------------------|
| FL       | IF                  | VVS <sup>1-2</sup>          | VS <sup>1-2</sup>      | SI <sup>1-2</sup> | I <sup>1-3</sup> |
| Flawless | Internally Flawless | Very Very Slightly Included | Very Slightly Included | Slightly Included | Included         |

